

EXPONA®

BEVEL LINE

LUXURY VINYL TILES DEFINED

Covering a large expanse of a commercial interior, the choice of floorcovering can greatly influence the atmosphere that area evokes when people walk into it. Whether choosing between a subtle base for interior fixtures and fabrics, or an eye catching statement floor designed to engage and inspire, attention to detail is essential to achieve a high specification finish.

By developing an understanding of how natural materials are formed and react to the elements over time, we expertly bring together the key design features that make up all our collections; colour variation, authentic pattern formations, and complementary surface textures. Each component comes together to create a floorcovering that beautifully mimics natural flooring materials.

BEVEL LINE

LUXURY VINYL TILES DEFINED

WOOD

Featuring all of the intricate details and unique characteristics you would expect to see in real timber flooring, Expona Bevel Line wood effect planks are designed with authenticity in mind. The appearance of natural wood is carefully replicated using variable shades and tones, combined with individual grain and knot details and attractive surface textures to complement a wide variety of high-design commercial interiors.




WOOD



2817 Scandinavian White Oak  
184.2 x 1219.2mm
Emboss: Wood structure



2818 Ashen Oak 
184.2 x 1219.2mm
Emboss: Wood structure





2823 Harewood Limed Oak
203.2 x 1219.2mm
Emboss: Wood structure







WOOD



2998 Grey Ash
101.6 x 914.4mm
Emboss: Fine wood structure



2819 Laurel Limed Oak
184.2 x 1219.2mm
Emboss: Wood structure







2813 Blond Field Ash
76.2 x 914.4mm
Emboss: Fine wood structure







2816 Boardwalk Variety Oak* 
76.2/101.6/152.4 x 914.4mm
Emboss: Fine wood structure

2824 English Brushed Oak 
203.2 x 1219.2mm
Emboss: Wood structure

*Planks are supplied in 3 widths. 36 planks (12 planks of each size: 76.2/101.6/152.4 x 914.4mm) per box





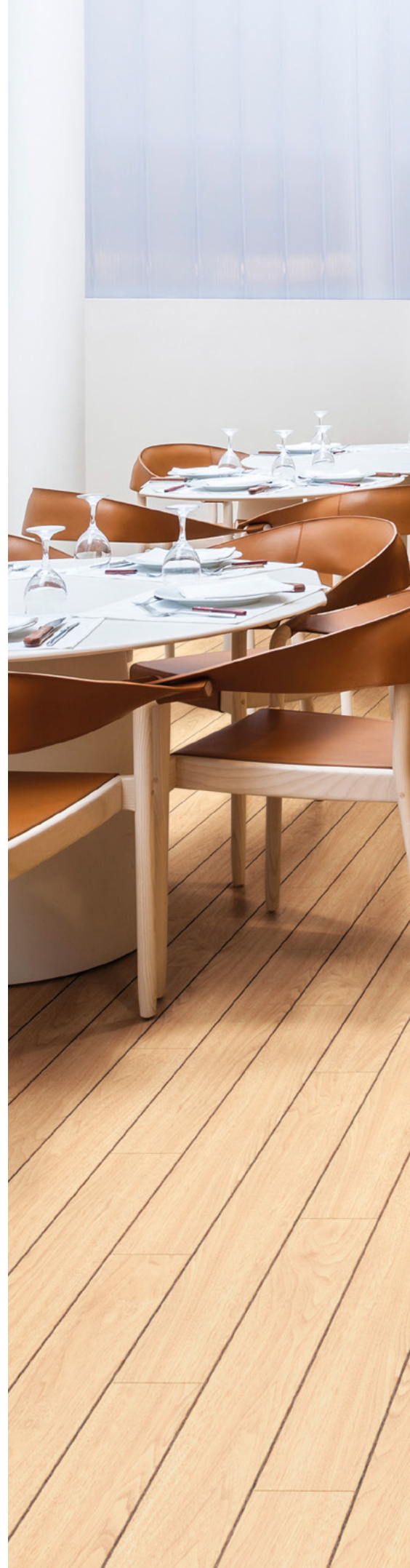
WOOD



2971 Light Oak
101.6 x 914.4mm
Emboss: Fine wood structure



2974 American Oak
101.6 x 914.4mm
Emboss: Fine wood structure





WOOD



2821 Greenwich Oak
184.2 x 1219.2mm
Emboss: Wood structure



2815 Enriched Variety Oak*
76.2/101.6/152.4 x 914.4mm
Emboss: Fine wood structure



*Planks are supplied in 3 widths. 36 planks (12 planks of each size: 76.2/101.6/152.4 x 914.4mm) per box



2825 Honey Brushed Oak
203.2 x 1219.2mm
Emboss: Wood structure



part in making the
would like to thank

**EUROPEAN REGIONAL
DEVELOPMENT
FUND**

HENRY CHARITABLE TRUST
JP JACOBS CHARITABLE TRUST
THE JOHNSON FOUNDATION
THE MONUMENT TRUST
COLBURN CHARITABLE TRUST
THE OLIVER STANLEY
CHARITABLE TRUST

part, we would like to thank

**LIVERPOOL
CITY COUNCIL**
PAUL HAMLYN FOUNDATION
KNOWSLEY MSC

Partner

DEBBE UNIVERSITY

us and Sponsors

MEDIA
VISUAL
HOTEL
ACTIONS
BARTER
IN LEP
D

MAZARS
MERSEYTRAVEL
NW SYSTEMS
ORNDY
SYNERGY
UNIFORM
WRIGHTMORE
INSURANCE GROUP

ift us a legacy

SELLE
BRIAN BARRY
arts Of Theatre

based on our website at
playhouse.com





WOOD



2975 Rich Oak
101.6 x 914.4mm
Emboss: Fine wood structure



2976 French Nut Tree
101.6 x 914.4mm
Emboss: Fine wood structure





2814 Rich Native Oak
76.2 x 914.4mm
Emboss: Fine wood structure



WOOD



2822 Stained Heart Pine
184.2 x 1219.2mm
Emboss: Wood structure



2999 Smoked Chestnut
101.6 x 914.4mm
Emboss: Fine wood structure



ATING ORY

Chamber

owberry Hill, the
the most consistent
a book chamber,
evoked the reign
is patronized by
ation of George
antonia Holbein
Royal Collection,
other portraits of
etics like Cardinal

l people walls, a ceiling
side and a chimney piece
Henry VIII's last
ishop of Canterbury.

ed 's kind of
the pictures are
k and the cloudy
side, while the white
inkling of gold on
pave as the painted
windows and
s to which they look.





BEVEL LINE

LUXURY VINYL TILES DEFINED

STONE

An eclectic collection of time-honoured and modern man-made materials, Expona Bevel Line Stone stretches across an assortment of interior trends found in larger commercial spaces. Luxurious marble, weathered concrete and smooth limestone tiles offer a wide scope of interior design styles in a range of larger tile sizes, ideal for commercial areas.



STONE

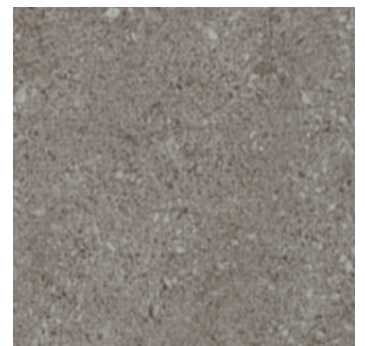


2826 Venetian Marble
457.2 x 914.4mm
Emboss: Pitted stone structure



2827 Soho Marble
457.2 x 914.4mm
Emboss: Pitted stone structure





2828 Weathered Concrete
457.2 x 914.4mm
Emboss: Pitted stone structure







STONE

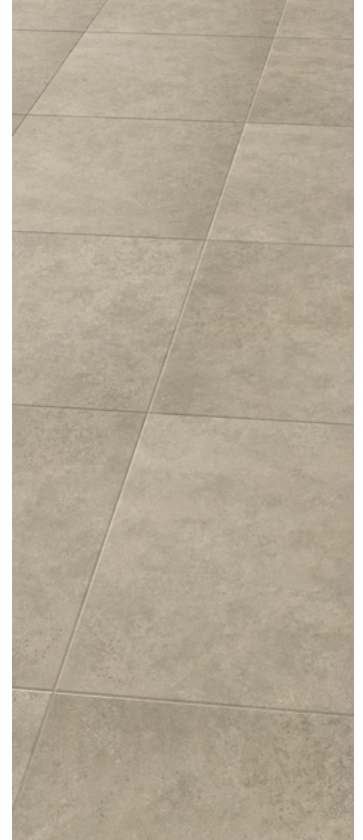


2981 Portland Stone
457.2 x 457.2mm
Emboss: Fine stone structure



2829 Natural Tumbled Stone
304.8 x 914.4mm
Emboss: Pitted stone structure





2987 Wet Concrete
457.2 x 457.2mm
Emboss: Fine stone structure



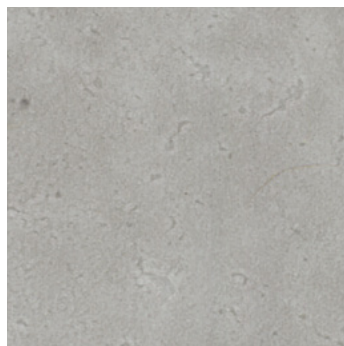
STONE



2832 Bowden Grey Slate
304.8 x 914.4mm
Emboss: Pitted stone structure

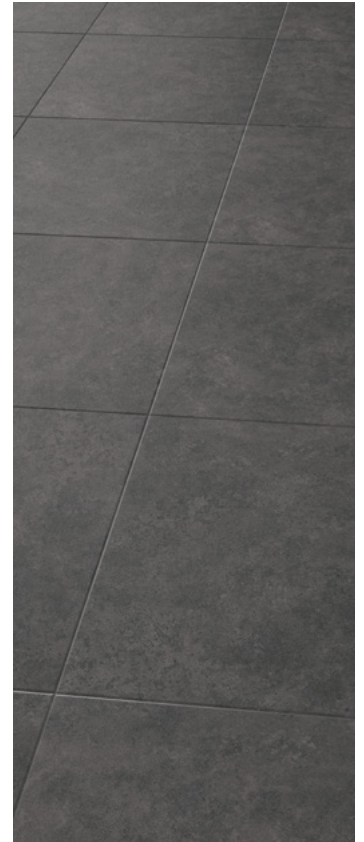


2831 Grey Tumbled Stone
304.8 x 914.4mm
Emboss: Pitted stone structure





2832 Bowden Grey Slate with Pearl Grouting Strip



2989 Black Limestone
457.2 x 457.2mm
Emboss: Fine stone structure



BEVEL LINE

LUXURY VINYL TILES DEFINED

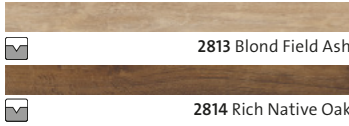
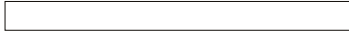
THE COLLECTIONS

The following spreads summarise the extensive Expona Bevel Line collection, featuring accurate product scans as well as detailing all tile and plank sizes. Designs that feature pattern variations are highlighted for easy identification, and the whole collection has been grouped by plank or tile size, so depending on the scale of the installation a suitable tile can be quickly selected.

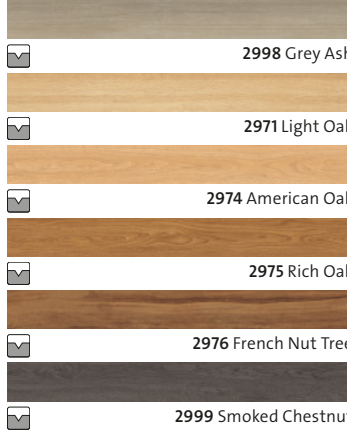


WOOD COLLECTION

3" x 36"
76.2 x 914.4mm



4" x 36"
101.6 x 914.4mm



7.25" x 48"
184.2 x 1219.2mm



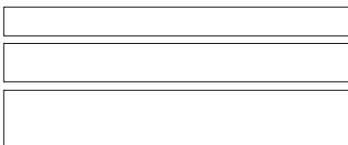
8" x 48"
203.2 x 1219.2mm



SIZE MIX

Planks are supplied in 3 widths. 36 planks (12 planks of each size: 76.2/101.6/152.4 x 914.4mm) per box

3/4" x 36"
76.2/101.6/152.4 x 914.4mm



2816 Boardwalk Variety Oak



2815 Enriched Variety Oak

STONE COLLECTION

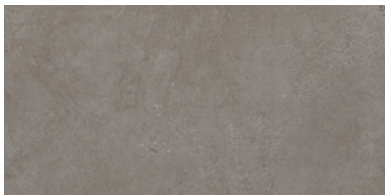
18" x 36"
457.2 x 914.4mm



 **2826 Venetian Marble**

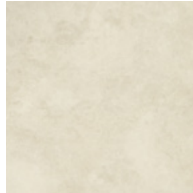
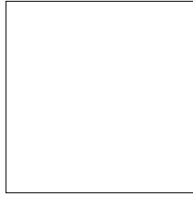


 **2827 Soho Marble**

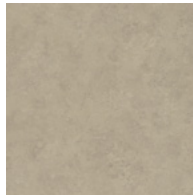


 **2828 Weathered Concrete**

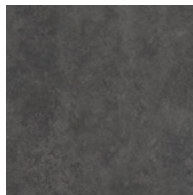
18" x 18"
457.2 x 457.2mm



 **2981 Portland Stone**

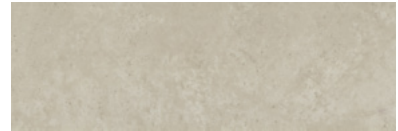



 **2987 Wet Concrete**

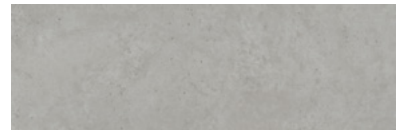



 **2989 Black Limestone**

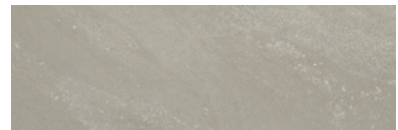
12" x 36"
304.8 x 914.4mm




 **2829 Natural Tumbled Stone**



 **2831 Grey Tumbled Stone**



 **2832 Bowden Grey Slate**

Accurate authenticity is at the heart of Expona, representing the allure, distinction and unpredictability of natural timber and stone. To replicate these materials, the products may contain knots and variation in markings as part of their design.

Although we endeavour to ensure the brochure print process represents the true colour of each product, we recommend you view an actual sample which we shall be pleased to supply, free of charge. Visit www.polyflor.com and follow the samples link for further details.

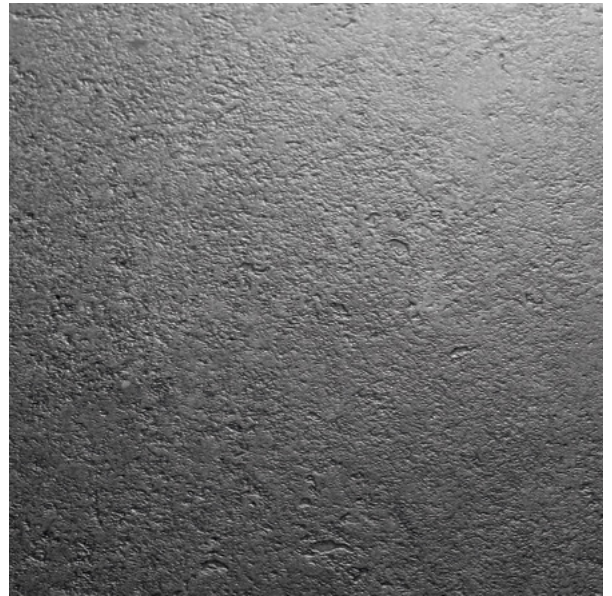
EMBOSES

Expona Bevel Line offers exceptional quality and a range of leading wood and stone designs as a result of extensive research and innovative product development. The combination of high-clarity design film and faithful surface textures make Expona the supreme flooring choice.

The surface embossing developed for the Expona Bevel Line collection has been designed to precisely replicate the appearance and feel of real wood timbers and natural stone structures, which are then paired with corresponding designs for a premium finish.



Fine stone structure



Pitted stone structure



Fine wood structure



Wood structure

INLAY STRIPS

Developed to add fine detailing and authenticity to an overall floorcovering, these inlay strips can be installed between tiles and planks to emphasise or accentuate the natural floor design. They can also create zones or highlight features, or add a bold graphic look to an interior.

Grouting Strips

2.0mm gauge

5 x 914mm

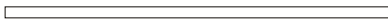


0037 Beige



0036 Grey

3 x 914mm



2031 Ice



2033 Pearl



2035 Grey



2037 Coffee



2039 Graphite

Marquetry Strips

2.0mm gauge

3 x 914mm



2056 Maple



2057 Natural Oak



2058 Classic Oak



2059 Walnut

Feature Strips

2.0mm gauge

5 x 1000mm



0025 Silver



0028 Black



0031 Brown



0026 Gold



0032 Cream



DECORATIVE DESIGN FLOORS

The flexibility of Luxury Vinyl Tiles to be laid individually allows us to discover a wide assortment of flooring patterns. By using a single shade or combining different flooring tiles together in a variety of layouts, a stunning result can be achieved with little effort, whilst multi-sizes pre-packed design floors offer an out of the box solution that recreates the appearance of re-purposed timber.

Recycled Wood Design

152.4 x 914.4mm

101.6 x 914.4mm

76.2 x 914.4mm



2814 Rich Native Oak & 2971 Light Oak



Full Plank Herringbone

With little or no cutting required, beautiful flooring installations such as herringbone and ships decking patterns can create eye-catching interiors, and the addition of inlay strips adds detailing to highlight areas or features.

Ships Decking



TECHNICAL DATA

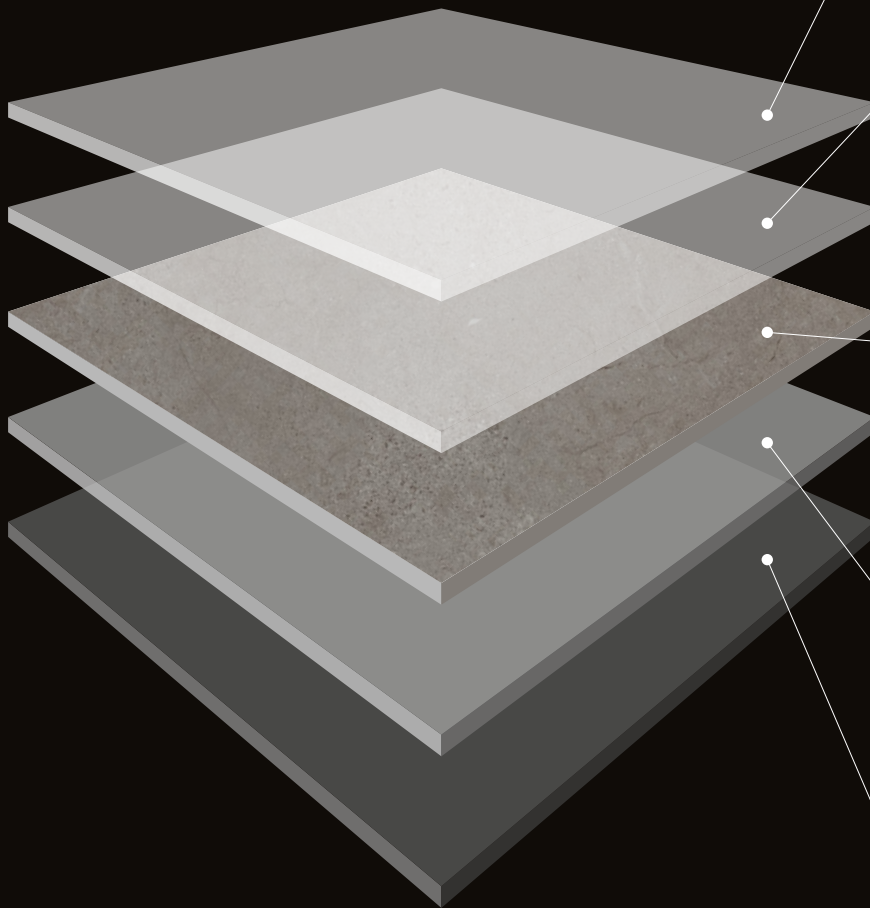
Characteristics	Standards	Unit	EXPONA BEVEL LINE
Type of floorcovering	EN ISO 10582		Heterogeneous, PVC
Surface treatment			PUR
Total weight	EN ISO 23997	g/m ²	4290
Performance classification	EN ISO 10874		23, 33, 42
Gauge	EN ISO 24346	mm	2.5
Wear layer thickness	EN ISO 24340	mm	0.55
Packaging plank size	EN ISO 24342	mm	48 @ 76.2 x 914.4 = 3.34 m ² 36 @ 101.6 x 914.4 = 3.34 m ² 15 @ 184.2 x 1219.2 = 3.37 m ² 14 @ 203.2 x 1219.2 = 3.46 m ²
Packaging size recycled wood designs	EN ISO 24342	mm	12 @ 76.2 x 914.4 12 @ 101.6 x 914.4 12 @ 152.4 x 914.4 } = 3.62 m ²
Packaging tile size	EN ISO 24342	mm	16 @ 457.2 x 457.2 = 3.34 m ² 12 @ 304.8 x 914.4 = 3.34 m ² 8 @ 457.2 x 914.4 = 3.34 m ²
Dimensional stability	EN ISO 23999	%	< 0.1
Residual indentation	EN ISO 24343-1	mm	0.05 **
Colour fastness to artificial light	EN ISO 105-B02	level	≥ 6
Behaviour to fire	EN 13501-1		Bfl - s1
Slip resistance	DIN 51130 EN 13893 AS 4586		R10 DS R10
Impact sound reduction	EN ISO 10140-3	dB	2
Resistance to thermal conductivity	EN 12667 ISO 8302	m ² k/w	0.02
Assessment of static electrical propensity	EN 1815	kV	< 2
Chemical resistance	EN ISO 26987		*
Abrasion resistance	EN ISO 10582 EN 660-2		type I Group T
Castor chair suitability	ISO 4918		yes, type W, EN 12 529
Underfloor heating suitability	EN 1264-2		suitable max. 27 °C
VOC emissions	Indoor Air Comfort Gold FloorScore AgBB		Eurofins certified product Certified product Very low emissions

* Resistant depending on concentration and time of exposure, in case of increased impact of oils, grease, acids, alkalis and other aggressive chemicals please contact us.

** Averaged test value from current production

STRUCTURE

EXPONA tiles and planks consist of individual layers which are thermally pressed and feature a polyurethane reinforcement (PUR). EXPONA combines a vast range of authentic wood and stone designs alongside creative, innovative and abstract effects with the excellent easy-care characteristics of PVC flooring.



Reinforced Polyurethane

The PUR treatment supports a simple cleaning regime.

Wear layer

The embossed, 0.55mm, high-density and transparent layer is hard wearing and protects the design.

Decoration layer

An innovative printing technique makes the high-clarity design film a true representation of natural materials.

Stabilisation layer

Improved dimensional stability is achieved by minimising the effect of surrounding physical properties e.g. temperature fluctuations.

Load-bearing layer

The basis for the long service life and high performance of EXPONA.

HERE TO HELP

ENVIRONMENT

As a leading global manufacturer of high quality, high performance floorcoverings, Polyflor have demonstrated a high level of commitment to minimising the impact our products have on the environment, and endeavour to meet these requirements with a focus on sustainability and a healthy indoor climate.

All Expona flooring has the prescribed CE mark, as a European declaration of performance and is regularly tested to ensure the exceptional standards are continually met by external third parties including Eurofins, one of Europe's leading service providers in the field of analysis.

Through these annual external inspections, Eurofins have awarded Expona Bevel Line the Indoor Air Comfort Gold rating. This certificate is awarded to products with VOC emissions below any globally determined VOC limits. Expona Bevel Line is certified with FloorScore, BRE and LEED credits.

All Expona flooring is also 100% recyclable and contains average 40% recycled material, which is integrated into new flooring production insofar as is possible.

SUSTAINABILITY

As a member of ERFMI, the European Resilient Flooring Manufacturer's Institute, Polyflor, a company of James Halstead PLC, supports the ideal of sustainable construction and has made available an Environmental Product Declaration (EPD) for Expona Bevel Line. Expona floorcoverings have been assessed under the EN 15804 programme of the Institute for Construction and Environment (IBU) for the environmental assessment of buildings.

VISIT US ONLINE

Visit polyflor.com for detailed product and technical information on all flooring collections within the Polyflor portfolio. Our award winning website provides an easy to follow navigation system to help you find exactly what you are looking for, free downloads, and free product and literature samples which can be easily ordered through the website.

ORDER SAMPLES

Polyflor provide a complimentary product sample service so you can sample your choice of flooring before you make your final selection, and ensure you find the exact floorcovering you are looking for. To order your free sample of any Expona Bevel Line colour, visit the Polyflor website, call the dedicated Polyflor Samples Hotline on +44 (0) 161 767 2551 or speak with your local Polyflor provider.

CONTACT US

For general information on your specific project, either speak with your local Polyflor provider or contact us directly.

If you require additional detailed technical data, either visit polyflor.com and follow the links to the technical pages, contact Polyflor Customer Technical Services on +44 (0) 161 767 1912 or email tech@polyflor.com.

POLYFLOR™ INTERNATIONAL

Australia

Polyflor Australia
Tel: +61 3 9215 4400
Tel: 1800 777 425
E-mail: sales@polyflor.com.au

Canada

Polyflor Canada Inc.
Tel: +1 905 364 3000
E-mail: sales@polyflor.ca

China

Polyflor Hong Kong
Tel: +(852) 2865 0101
E-mail: info@polyflor.com.hk

France

James Halstead France SAS
Tel: +33 (0) 8 20 20 32 11
E-mail: info@jhfrance.fr

Germany

objectflor Art und Design Belags GmbH
Tel: +49 (0) 2236 966 330
E-mail: info@objectflor.de

India

Polyflor India Pvt Ltd
Tel: +91 22 4023 2485
E-mail: info@polyflor.co.in

Ireland

Polyflor Ireland
Tel: +353 (1) 864 9304
E-mail: salesireland@polyflor.com

New Zealand

Polyflor New Zealand Ltd
Tel: +64 9 269 1111
Tel: 0800 765 935
E-mail: sales@polyflor.co.nz

Norway

Polyflor Nordic
Tel: +47 23 00 84 00
E-mail: firmapost@polyflor.no

Poland

Polflor Sp. Z o.o.
Tel: +48 (0) 61 820 3155
E-mail: polyflor@polflor.com.pl

Russia

Polyflor Contract Ltd
Tel: +7 (812) 332 42 02
E-mail: info@polyflor.ru

South Africa

Poly Sales Africa (Pty.) Ltd
Tel: +27 (0) 11 609 3500
E-mail: info@polyflor.co.za

Sweden

FalckDesign AB
Tel: +46 (0) 300 15820
E-mail: info@falckdesign.com

POLYFLOR™ UK

Polyflor Ltd, PO Box 3, Radcliffe New Road
Whitefield, Manchester, M45 7NR

UK Sales Direct: +44 (0) 161 767 1122
Export Sales Direct: +44 (0) 161 767 1913
UK Fax: +44 (0) 161 767 1128
Export Fax: +44 (0) 161 767 1166
Technical Support: +44 (0) 161 767 1912
Reception: +44 (0) 161 767 1111
E-mail: info@polyflor.com



For details on distribution,
as well as up to date product and
technical information, please visit

www.polyflor.com