

STONE



2542 Champagne Limestone

tile w/l 457.2 x 457.2mm



2543 Jerusalem Limestone

tile w/l 457.2 x 457.2mm



2544 Cathedral Limestone

tile w/l 457.2 x 457.2mm



2545 Ground Limestone

tile w/l 457.2 x 457.2mm



2540 Limed Concrete

tile w/l 457.2 x 457.2mm



2567 Light Grey Concrete

tile w/l 600 x 600mm



2568 Warm Grey Concrete

tile w/l 600 x 600mm



2566 Cold Grey Concrete

tile w/l 600 x 600mm



2569 Dark Grey Concrete

tile w/l 600 x 600mm



2541 Black Concrete

tile w/l 457.2 x 457.2mm



2561 Grey Sandstone

tile w/l 457.2 x 457.2mm

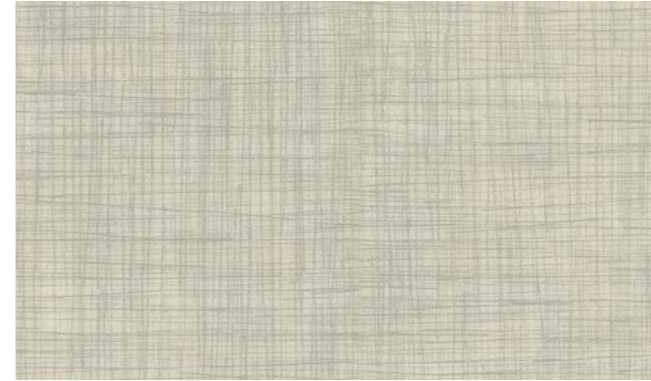


2560 Slate

tile w/l 457.2 x 457.2mm

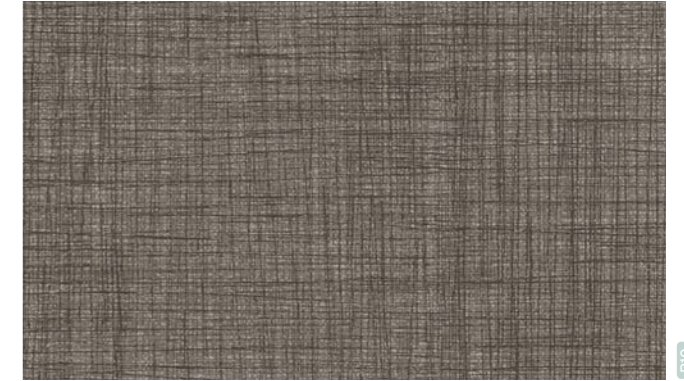


EFFECT



2546 Porcelain Weave

tile w/l 457.2 x 457.2mm



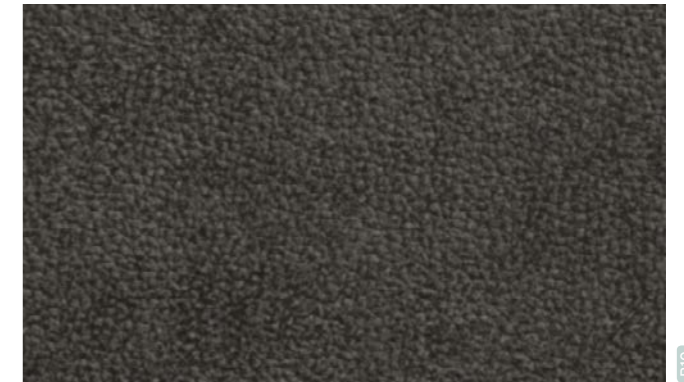
2547 Charcoal Weave

tile w/l 457.2 x 457.2mm



2564 Brown Leather

tile w/l 457.2 x 457.2mm



2565 Dark Grey Leather

tile w/l 457.2 x 457.2mm



The R values shown denote a ramp test result, which is an ex-factory measure of slip resistance. For safety flooring with sustainable wet slip resistance, refer to Expona Control PUR or the Polysafe ranges. Decoration and shade may vary from the sample shown. For final colour selection a larger sample should be used which Polyflor can provide.

Feature bevelled edges

