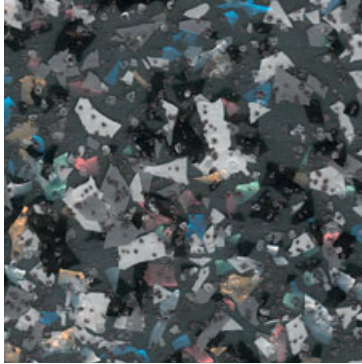




POLYFLOR POLYSAFE™ MOSAIC PUR

Decorative heavy-duty safety flooring



LRV 17.6

NCS S 6500-N

Graphite Pearl 4165

w/r 4165



LRV 34.4

NCS S 4010-G10Y

Green Opal 4195

w/r 4195



LRV 38.7

NCS S 3010-Y40R

Earthstone 4155

w/r 4155

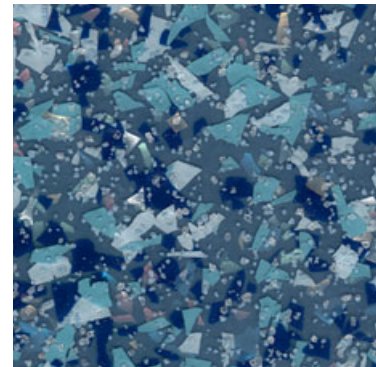


LRV 54.6

NCS S 2005-G70Y

Pearlite 4115

w/r 4115

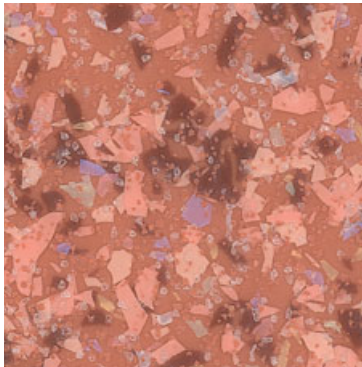


LRV 18.9

NCS S 5020-R90B

South Sea 4175

w/r 4175



LRV 24.2

NCS S 3030-Y70R

Sunstone 4185

w/r 4185



LRV 41.1

NCS S 3010-Y20R

Akoya 4125

w/r 4125

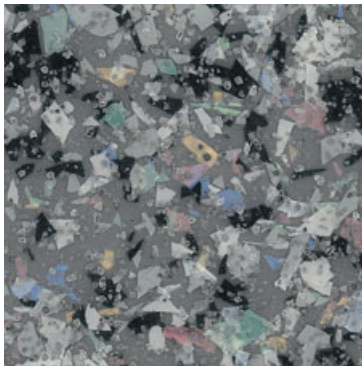


LRV 38.5

NCS S 3502-Y

Grey Fusion 4105

w/r 4105

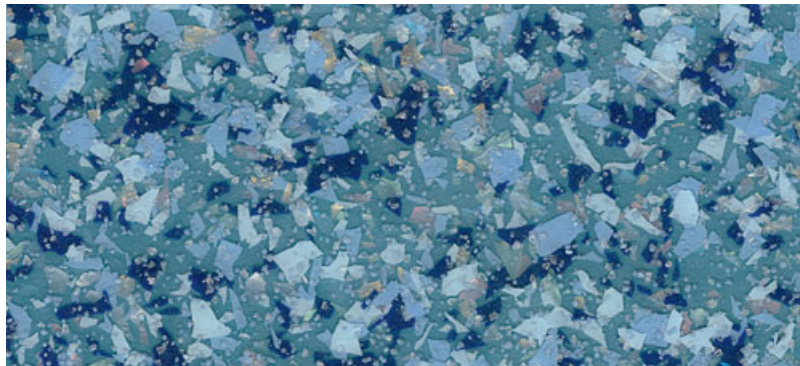


LRV 22.5

NCS S 5500-N

Orient Grey 4135

w/r 4135



LRV 25.1

NCS S 4020-B10G

Freshwater 4145

w/r 4145

w/r = weld rod



® Refer to BRE Global ratings on www.greenbooklive.com

The closest perceived NCS - Natural Colour System references are quoted for your convenience. For more information see www.ncscolour.com
Light Reflectance Values (LRV) - all colours are tested in accordance with BS8300:2009.

