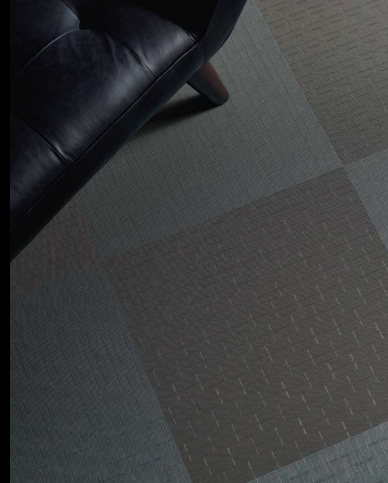


WOVON

The Polyflor Wovon interwoven vinyl flooring a collection of diverse weave designs offering a varied yet unmistakable textile feeling. With the advantages of its heavy commercial vinyl construction the Wovon collection is a hard wearing, low maintenance option for commercial and residential locations. Such areas include Office, Retail and Hotels.



FLOORCARE

INITIAL CONSTRUCTION CLEAN

In all cases: Remove all loose debris from the surface. Ensure that all traces of adhesive are removed from the surface of the floorcovering. Mop sweep or dry vacuum to remove dust and grit.

Manual Cleaning



- Sweep / Vacuum the floor thoroughly to remove any loose dust, grit or debris that maybe on the surface. Apply a solution of neutral cleanser, diluted to the manufacturer's instructions, to the floor and leave for sufficient time to react and break up any ingrained dirt. Using a deck brush manually scrub the floor; remove slurry using a micro fibre mop and bucket. Rinse thoroughly using clean, warm water and leave to dry thoroughly.

Mechanical Cleaning

Tools Equipment required: Scrubber Drier fitted with a cylinder or soft rotary scrubbing brush, / Polyflor Approved Neutral Cleaning Agent.

- Dry Vacuum the floor thoroughly to remove any loose dust, grit or debris that maybe on the surface. Fill the tank of the selected scrubber drier with a solution of neutral cleanser, diluted to the manufacturer's instructions. Mechanically scrub the floor thoroughly picking up any wet slurry via the wet vacuum on the scrubber drier
- For very heavy soiling, dilution rates above the manufacturer's minimum recommendations may be necessary

ROUTINE MAINTENANCE

Daily

- TREAT STAINS AS SOON AS POSSIBLE
- The frequency of each of the operations is dependent upon the type and intensity of traffic.
- Sweep / vacuum the floor to remove surface dust and loose dirt.
- If required using manual or mechanical means scrub the floor thoroughly. Remove any resultant slurry Rinse thoroughly with clean, warm water, and allow to dry naturally

PERIODIC MAINTENANCE



Weekly/Monthly

- Manual Cleaning - Sweep / Vacuum the floor thoroughly to remove any loose dust, grit or debris that maybe on the surface. Apply a solution of neutral cleanser, diluted to the manufacturer's instructions, to the floor and leave for sufficient time to react and break up any ingrained dirt. Using a deck brush manually scrub the floor; remove slurry using a micro fibre mop and bucket. Rinse thoroughly using clean, warm water and leave to dry thoroughly.
- Mechanical Cleaning - Dry Vacuum the floor thoroughly to remove any loose dust, grit or debris that maybe on the surface. Fill the tank of the selected scrubber drier with a solution of neutral cleanser, diluted to the manufacturer's instructions. Mechanically scrub the floor thoroughly picking up any wet slurry via the wet vacuum on the scrubber drier.
- For very heavy soiling, dilution rates above the manufacturer's minimum recommendations may be necessary.

NOTE 1: For small areas, where there is no suitable scrubber drier available, a deck scrubbing brush should be used in conjunction with a wet vacuum or mop and bucket system

NOTE 2: For very heavy soiling, dilution rates above the manufacturer's minimum recommendations may be necessary.



APPLICATION OF A FLOOR DRESSING

- A floor dressing or maintainer containing polish should **NOT** be applied to the Wovon range. If in any doubt, consult our Technical Support staff on 0161 767 1912

- Cleaners and detergents should be diluted as per the manufacturer's instructions. For recommended products, see the Polyflor Approved Maintenance.
- For further information and advice on specific applications, consult Polyflor Customer Technical Services on +44 (0)161 767 1912, or email tech@polyflor.com.



- Always follow the Health and Safety guidance provided.
- At the date of issue the data presented is correct. However, Polyflor Ltd. reserve the right to make changes which do not adversely affect performance or quality.

REGULAR CLEANING IS MORE BENEFICIAL TO THE FLOORCOVERING AND MORE COST-EFFECTIVE THAN OCCASIONAL HEAVY CLEANING.

