



Polysafe™

COMMERCIAL & RESIDENTIAL
SAFETY FLOORING
COLLECTIONS



Welcome to Polyflor

Polyflor is the only UK - based manufacturer of a full range of high quality, high performance resilient floor coverings. Part of James Halstead PLC, with headquarters based in Manchester, England, the group has subsidiary businesses located in several countries around the world including Canada. With a number of manufacturing facilities, extensive warehousing capacity located throughout the world and market leading designs, innovative products and a world class sustainability record, Polyflor is covering the world of both commercial and residential vinyl floor coverings.



Sustainable Performance

Across all areas of the business, sustainability is high on the agenda and our strategy is to minimise the environmental impact of our operations and products.

At Polyflor we are clear in the belief that our customers shouldn't have to compromise on performance, choice or budget in order to use products with the lowest impact as positive environmental credentials and benefits are built in to our flooring.

Through numerous environmental assessments, Polyflor products continue to demonstrate that they are environmentally sound, have minimal impact on the environment and will contribute positively on project assessments including BREEAM®, LEED® and Green Star®.

The unique composition of vinyl creates an extremely practical and durable flooring where high quality and high performance come together. Other elements, whether underfoot safety, hygiene, ease of maintenance, durability or aesthetics work hand in glove with the environmental performance of the product, creating a portfolio of multi-functional sustainable floor coverings to suit budgets for both new build and refurbishment schemes.

For more information, take a look at our latest Sustainability Report at www.polyflor.ca/sustainability



Here to Help

We can provide advice on the suitability, performance and application of any Polyflor product and support you throughout your project. We work closely with our global distribution partners to ensure that support is mirrored throughout the supply chain.





Education



Workplace



Health & Care



Retail



Housing



Leisure & Hospitality



Industry

Market Sectors

Whether it's helping the healing or the learning process, designing an inspiring shopping or visitor experience, creating a productive work environment or refurbishing areas of your own home, here at Polyflor we have a vast selection of multi-functional products to suit the specification, scale and budget of your project across a wide variety of sectors.

Floor coverings, when part of the complete design concept, can have a significant impact on the 'look and feel' of a space, enabling the creation of truly bespoke interiors. With significant warehousing capacity and product availability, fast lead times are guaranteed for customers through our extensive network of distribution partners based throughout the UK and around the world.

**Whatever your project,
we've got it covered.**

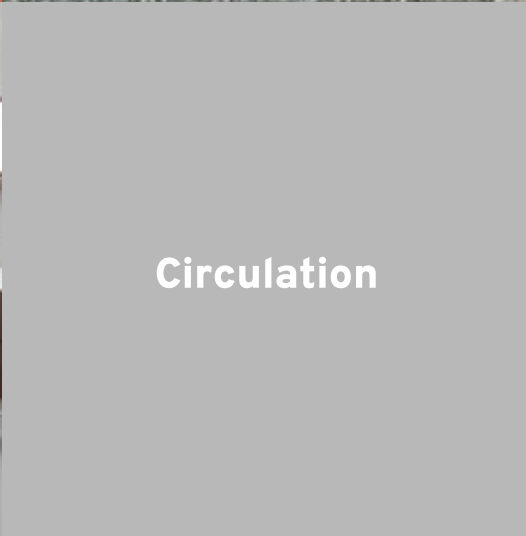




Consulting
Rooms



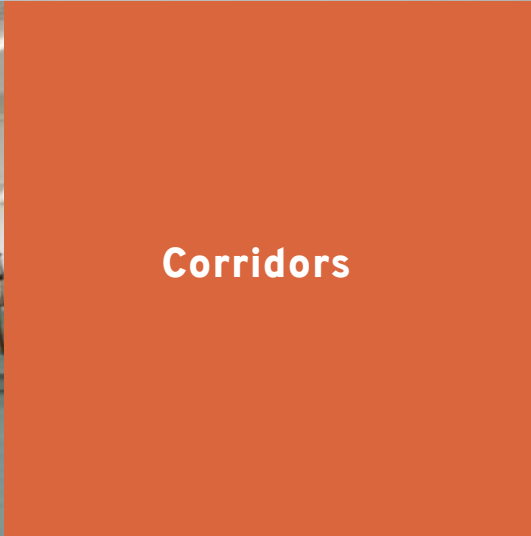
Bathroom &
Shower Areas



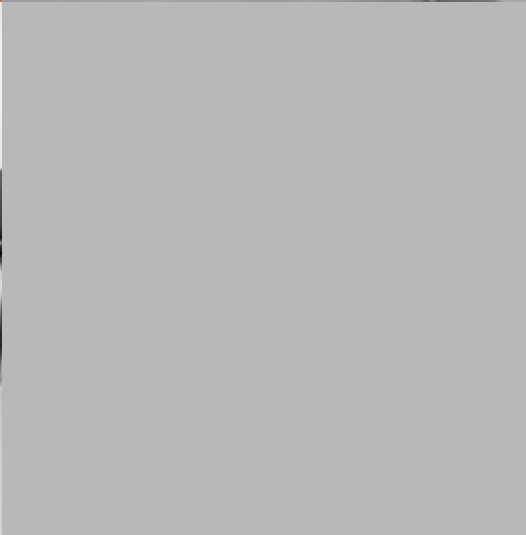
Circulation



Corridors



Treatment
Rooms



Health & Care

The creation of a safe, clean and comforting environment for patients and staff is paramount within complex and busy health and care establishments.

Floor covering specification will depend upon the function of the area and traffic levels, as well as the need to adhere to strict performance, quality and hygiene requirements.

Hardwearing floor coverings that are easy to clean, offer enhanced slip resistance and acoustic benefits can help create specialist medical areas that are high performance and aesthetically appealing. Design and colour have many functions within a health and care environment, including zoning, wayfinding and can contribute positively to support those being cared for and the staff themselves.

New product development is at the heart of our health and care flooring solutions. Recent innovations include the availability of plainer decoration products for those living with dementia, a stud-free safety flooring range for continually wet areas, and for areas where a quick turnaround is required, a loose lay safety flooring designed for adhesive free installation.



**Entrances
& Receptions**



Classrooms



**Circulation Areas
& Corridors**



**Food Service
Areas**



Changing Rooms



Dining Hall



Education

In busy education establishments the creation of a safe and stimulating environment which is conducive to learning is essential for pupils and staff alike.

The performance requirement of flooring in education environments can depend upon the function of the space, the age of the pupils, expected activity levels and the intensity of footfall.

Easy to clean, tough and durable floor coverings are often required to cope with the demands of complex learning environments. Polyflor's diverse range of hard wearing, high-design product ranges can be used to create education environments that are both practical and visually appealing, bringing an energy and vibrancy through the use of colour, texture and patterns.





Entrance



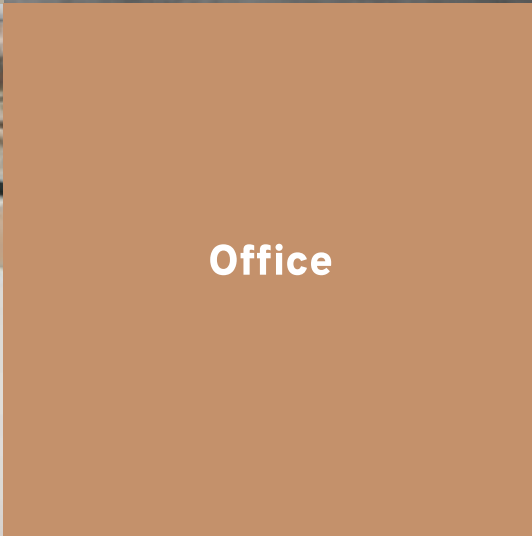
Merchandise
Areas



Walkways



Stores



Office



Changing Rooms



Retail

Within retail establishments, flooring is one of the hardest working elements of an interior design scheme when it comes to creating an inspirational and memorable space.

Heavy, repeated footfall is a characteristic of retail premises and floor coverings are required to be hardwearing, without compromising on aesthetics or design.

On trend flooring collections that authentically replicate the look of natural materials are developed with the retail sector in mind. Stock availability of these attractive floor coverings in a variety of designs, colours, surface textures, can often be key to ensure that long term roll out programmes can be fulfilled. To avoid disruption and down-time flexible flooring solutions are required and these include loose lay, adhesive-free product ranges for quick turnaround projects. Floor designs can be made even more bespoke with the creative use of inlay accessories.



**Entrances
& Receptions**



Wet Areas



**Circulation
& Stairwells**



Galleries



Gyms



Restaurants



Leisure & Hospitality

The flooring requirements of the diverse leisure and hospitality sector depend upon the functionality of the space.

High levels of traffic require a robust, durable flooring, with conformance to internationally recognised standards for fire, slip resistance and acoustics.

The extensive Polyflor portfolio enables the selection of fit-for-purpose products as per the use area specification. A variety of looks can be achieved in order to create unique spaces or a consistent style dependent upon the overall interior design scheme by using a selection of available formats - sheet, tiles and planks in various colours, textures and finishes.

Products that are quick and easy to install, creating minimal disruption are preferable. Vinyl sheet can be welded to create a seamless space, impermeable to water, which combined with a bespoke cleaning regime provides a low maintenance, hygienic flooring solution in leisure and hospitality environments.



Entrance
Foyers



Open Plan
Offices



Reception



Corridors



Communal
Kitchens



Toilet &
Bathrooms



Workplace

The choice of floor coverings within a workplace can create a sense of identity for employees as well as providing a safe and secure working environment.

Flooring within a workplace must adhere to health & safety regulations and be durable enough to accommodate varying levels of footfall throughout the day.

Key environmental considerations within the workplace include noise control, underfoot comfort and indoor air quality. Polyflor flooring ranges are classified as low VOC and the availability of floor coverings with an acoustic foam layer can contribute significantly to reducing impact sound and improving underfoot comfort.

When considering design requirements, Light Reflectance Values (LRV) are available and can be used to ensure compliance to building regulations across multi-purpose spaces.



Toilet



Bathrooms



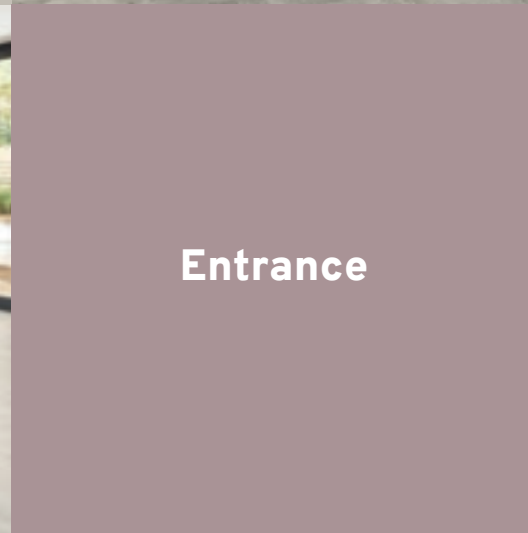
Kitchens



**Communal
Areas**



Entrance



Hallways



Housing

When it comes to choosing flooring for a residential setting, the impact of selecting the correct material should not be underestimated. Polyflor luxury vinyl flooring collections authentically replicate the natural beauty of wood and stone with enhanced durability and easier maintenance.

Flooring within any kind of housing is an opportunity to inject a sense of individuality and style into home interiors. From traditional to contemporary colours, textures and patterns, available in plank, tile or sheet format, the choice is extensive. Combining design and function, recent developments include interlocking planks and tiles for minimum disruption, with built in acoustic properties.



Toilets



Store Rooms



Circulation



Walkway



Showers



Servery
& Kitchens



Industry

Polyflor offers an extensive selection of fit-for-purpose products classified as suitable for very heavy commercial environments and intense use areas in a variety of industrial locations.

For areas designed to meet specific static control requirements the Polyflor ESD family of floor coverings feature electrostatic dissipative or conductive properties.

Within specialist environments high standards of cleanliness are often essential and products incorporating a polyurethane reinforcement, providing low maintenance benefits and resisting soiling and scuffing are available.





SLIP RESISTANT

Compliant with EN 13845 and engineered to provide slip resistant qualities which are sustainable and assured throughout the products guaranteed life. The collections are ideally suited for specification within a range of commercial environments where there is a risk of spillage or wetness.

Stone FX PUR	24
Wood FX PUR	26
Verona PUR	28
Verona PUR Pure Colours	30
QuickLay PUR	32
Standard PUR	34
Vogue PUR	36
Mosaic PUR	38

TECHNICAL SPECIFICATIONS

TECHNICAL DATA	STANDARDS	Polysafe Stone fx ^{PUR}	Polysafe Wood fx ^{PUR}	Polysafe Verona ^{PUR} : <i>Original</i>	Polysafe Verona ^{PUR} : <i>Pure Colours</i>
----------------	-----------	-------------------------------------	------------------------------------	---	---

Product Format

Gauge	ISO 24346 (EN 428)	2.0mm	2.0mm	2.0mm	2.0mm
Wear Layer	ISO 24340 (EN 429)	0.70mm	0.70mm	-	-
Sheet Size	ISO 24341 (EN 426)	2m x 20m (2.187 yds x 21.872 yds)	2m x 20m (2.187 yds x 21.872 yds)	2m x 20m (2.187 yds x 21.872 yds)	2m x 20m (2.187 yds x 21.872 yds)
Total Weight	ISO 23997 (EN 430)	2780g/m ²	2780g/m ²	2600g/m ²	2600g/m ²
Finish		PUR	PUR	PUR	PUR

Performance Requirements

General Performance	EN 13845	Conforms	Conforms	Conforms	Conforms
	ISO 11638 (EN 651)	-	-	-	-
	ASTM F1303	Conforms	Type I, Grade I, Class B Backing	Type II, Grade I, Class B Backing	Type II, Grade I, Class B Backing
	ISO 10582 (EN 649)	-	-	-	-
Use Area	ISO 10874 (EN 685)	23, 34, 43	23, 34, 43	23, 34, 43	23, 34, 43
Enhanced Slip Resistance	EN 13845	ESf	ESf	ESf	ESf
	RRL Pendulum Test	≥36 (wet test - 4S Rubber/Slider 96)	≥36 (wet test - 4S Rubber/Slider 96)	≥36 (wet test - 4S Rubber/Slider 96)	≥45 (wet test - 4S Rubber/Slider 96)
	DIN 51130 / DIN EN 16165 Ann. B	R10	R10	R10	R11
	Surface Roughness	Rz ≥20µm	Rz ≥20µm	Rz ≥20µm	Rz ≥20µm
	ASTM D2047	SCOF ≥0.8	SCOF ≥0.8	SCOF ≥0.8	SCOF ≥0.8
Abrasion Resistance	EN 13845	50,000 cycles	50,000 cycles	50,000 cycles	50,000 cycles
Reaction to Fire	EN 13501-1	Class Bfl-S1	Class Bfl-S1	Class Bfl-S1	Class Bfl-S1
	ASTM E648	Class 1	Class 1	Class 1	Class 1
	CAN/ULC S102.2	FSV < 300; SDV < 500	FSV < 300; SDV < 500	FSV < 300; SDV < 500	FSV < 300; SDV < 500
Static Electrical Propensity	EN 1815	≤2.0kV Classified as 'antistatic'	≤2.0kV Classified as 'antistatic'	≤2.0kV Classified as 'antistatic'	≤2.0kV Classified as 'antistatic'

Sustainability

BRE Green Guide		A+ ENP 415	A+ ENP 415	A+ ENP 472	A+ ENP 472
Indoor Air Comfort Gold		Eurofins certified product	Eurofins certified product	Eurofins certified product	Eurofins certified product
FloorScore		Certified	Certified	Certified	Certified
Finnish M1 Classification		Certified	Certified	Certified	Certified
AgBB/ABG		Pass	Pass	Pass	Pass
Responsible Sourcing	BES 6001	Excellent	Excellent	Excellent	Excellent

Acoustic Performance

Impact Sound Reduction	ISO 10140-3	-	-	-	-
------------------------	-------------	---	---	---	---

Maintenance Performance

Resistance to Chemicals	ISO 26987 (EN 423)	Good resistance	Good resistance	Good resistance	Good resistance
-------------------------	--------------------	-----------------	-----------------	-----------------	-----------------

All Polyflor commercial sheet vinyl ranges provide a continuous, impervious and hygienic flooring solution which can be confidently cleaned in accordance with recommended maintenance procedures and approved maintenance products. The implementation of an effective cleaning regime is the most important defence against infection.

The wet slip resistance across all Polysafe products is sustainable throughout the guaranteed life of the product, with strict adherence to Health & Safety Executive (HSE) guidelines.

TECHNICAL SPECIFICATIONS

TECHNICAL DATA	STANDARDS	Polysafe QuickLay ^{PUR}	Polysafe Standard ^{PUR}	Polysafe Vogue Ultra ^{PUR}	Polysafe Mosaic ^{PUR}
----------------	-----------	-------------------------------------	-------------------------------------	--	-----------------------------------

Product Format

Gauge	ISO 24346 (EN 428)	2.2mm	2.0mm, 2.5mm	2.0mm	2.0mm
Wear Layer	ISO 24340 (EN 429)	-	-	-	0.70mm
Sheet Size	ISO 24341 (EN 426)	2m x 20m	2.0mm: 2m x 20m (2.187 yds x 21.872 yds) 2.5mm: 2m x 20m (2.187 yds x 21.872 yds)	2m x 20m (2.187 yds x 21.872 yds)	2m x 20m (2.187 yds x 21.872 yds)
Total Weight	ISO 23997 (EN 430)	2700g/m ²	2.0mm: 2430g/m ² 2.5mm: 3100g/m ²	2400g/m ²	2400g/m ²
Finish		PUR	PUR	PUR	PUR

Performance Requirements

General Performance	EN 13845	Conforms	Conforms	Conforms	Conforms
	ISO 11638 (EN 651)	-	-	-	-
	ASTM F1303	Conforms	Type II, Grade I, Class B Backing	Type II, Grade I, Class B Backing	Conforms
	ISO 10582 (EN 649)	-	-	-	-
Use Area	ISO 10874 (EN 685)	23, 34, 43	23, 34, 43	23, 34, 43	23, 34, 43
Enhanced Slip Resistance	EN 13845	ESf	ESf	ESf	ESf
	RRL Pendulum Test	≥45 (wet test - 4S Rubber/Slider 96)	≥36 (wet test - 4S Rubber/Slider 96)	≥36 (wet test - 4S Rubber/Slider 96)	≥36 (wet test - 4S Rubber/Slider 96)
	DIN 51130 / DIN EN 16165 Ann. B	R11	R10	R10	R10
	Surface Roughness	Rz ≥20µm	Rz ≥20µm	Rz ≥20µm	Rz ≥20µm
	ASTM D2047	SCOF ≥0.8	SCOF ≥0.8	SCOF ≥0.8	SCOF ≥0.8
Abrasion Resistance	EN 13845	50,000 cycles	50,000 cycles	50,000 cycles	50,000 cycles
Reaction to Fire	EN 13501-1	Class Bfl-S1	Class Bfl-S1	Class Bfl-S1	Class Bfl-S1
	ASTM E648	Class 1	Class 1	Class 1	Class 1
	CAN/ULC S102.2	FSV < 300; SDV < 500	FSV < 300; SDV < 500	FSV < 300; SDV < 500	FSV < 300; SDV < 500
Static Electrical Propensity	EN 1815	≤2.0kV Classified as 'antistatic'	≤2.0kV Classified as 'antistatic'	≤2.0kV Classified as 'antistatic'	≤2.0kV Classified as 'antistatic'

Sustainability

BRE Green Guide	A+ Generic	A+ ENP 472	A+ ENP 472	A+ ENP 472
Indoor Air Comfort Gold	Eurofins certified product	Eurofins certified product	Eurofins certified product	Eurofins certified product
FloorScore	Certified	Certified	Certified	Certified
Finnish M1 Classification	Certified	Certified	Certified	Certified
AgBB/ABG	Pass	Pass	Pass	Pass
Responsible Sourcing	BES 6001	Excellent	Excellent	Excellent

Acoustic Performance

Impact Sound Reduction	ISO 10140-3	10dB	-	-	-
------------------------	-------------	------	---	---	---

Maintenance Performance

Resistance to Chemicals	ISO 26987 (EN 423)	Good resistance	Good resistance	Good resistance	Good resistance
-------------------------	--------------------	-----------------	-----------------	-----------------	-----------------

All Polyflor commercial sheet vinyl ranges provide a continuous, impervious and hygienic flooring solution which can be confidently cleaned in accordance with recommended maintenance procedures and approved maintenance products. The implementation of an effective cleaning regime is the most important defence against infection.

The wet slip resistance across all Polysafe products is sustainable throughout the guaranteed life of the product, with strict adherence to Health & Safety Executive (HSE) guidelines.



Polysafe Stone fx PUR



Technical Specification

Product Format		
Gauge	ISO 24346 (EN 428)	2.0mm
Wear Layer	ISO 24340 (EN 429)	0.70mm
Total Weight	ISO 23997 (EN 430)	2780g/m²
Finish	PUR	
Performance Requirements		
General Performance	EN 13845	Conforms
	ASTM F1303	Conforms
Use Area	ISO 10874 (EN 685)	23, 34, 43
Enhanced Slip Resistance	EN 13845	ESf
	RRL Pendulum Test	≥36 (wet test - 4S Rubber / Slider 96)
		R10
	DIN 51130 / DIN EN 16165 Ann. B	
	Surface Roughness	Rz ≥20µm
	ASTM D2047	SCOF ≥0.8
Abrasion Resistance	EN 13845	50,000 cycles
Reaction to Fire	EN 13501-1	Class Bfl-S1
	ASTM E648	Class 1
	CAN/ULC S102.2	FSV < 300; SDV < 500
	AS ISO 9239-1	>8.0kW/m²
Static Electrical Propensity	EN 1815	≤2.0kV Classified as 'antistatic'
Residual Indentation	ASTM F970 (Modified)	≤0.005" (750 psi)
Flexibility	ASTM F137	1.5" Pass
Resistance to Light	ASTM F1515	ΔE ≤ 8.0 - Meets
Resistance to Heat	ASTM F1514	ΔE ≤ 8.0 - Meets

Sheet Size

Format	Size	Shades	Coverage per Roll
Sheet	2m x 20m (2.187 yds x 21.872 yds)	22	40m² (47.834 yds)

Sustainability		
BRE Green Guide		A+ ENP 415
GreenTag	LCA Rate Gold Plus	GreenRate level A
Generic EN 15804 EPD		Available
Recyclable		100%
Recycled Content		10%
REACH		Compliant
Indoor Air Comfort Gold		Eurofins certified product
FloorScore		Certified
Finnish M1 Classification		Certified
AgBB/ABG		Pass
Responsible Sourcing	BES 6001	Excellent

Maintenance Performance		
Resistance to Chemicals	ISO 26987 (EN 423)	Good resistance
	ASTM F925	Good resistance
Alco Hand Gels	Compatible for use with most commonly used alco-based hand gels	
Steam Cleaning	Suitable for steam cleaning on a periodic basis	
All Polyflor commercial sheet vinyl ranges provide a continuous, impervious and hygienic flooring solution which can be confidently cleaned in accordance with recommended maintenance procedures and approved maintenance products. The implementation of an effective cleaning regime is the most important defence against infection.		

Hygiene		
Bacterial Resistance	ISO 846 Part C	Does not favour growth

Polysafe Stone fx PUR



Dove Slate **6012**
NCS S 3502-G

w/r 6012
LRV 35



Urban Concrete **6013**
NCS S 5502-Y

w/r 6013
LRV 24



Jurassic Stone **6011**
NCS S 4500-N

w/r 6011
LRV 22



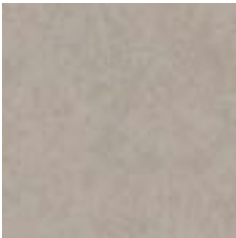
Natural Slate **6014**
NCS S 4502-G

w/r 6014
LRV 22



Dark Concrete **5089**
NCS S 5502-Y

w/r 5089
LRV 23



Flagstone Grey **5091**
NCS S 4005-Y50R

w/r 5091
LRV 35



Clay Stone **5092**
NCS S 5005-Y80R

w/r 5092
LRV 25



Light Concrete **5087**
NCS S 4005-G80Y

w/r 5087
LRV 33



Deep Fossil **5082**
NCS S 5502-Y

w/r 5082
LRV 22



Pebble Grey **5083**
NCS S 4000-N

w/r 5083
LRV 34



Muted Stone **5081**
NCS S 2005-Y50R

w/r 5081
LRV 46



Grey Flourite **4042**
NCS S 2002-Y50R

w/r 9803
LRV 48



Agate Grey **4043**
NCS S 3500-N

w/r 9804
LRV 38



Galena **4047**
NCS S 4502-R

w/r 9807
LRV 27



Gypsum **4044**
NCS S 2005-Y30R

w/r 9800
LRV 50



Copal **4046**
NCS S 3010-Y20R

w/r 9801
LRV 39



Andesite **4049**
NCS S 4005-Y50R

w/r 9802
LRV 26



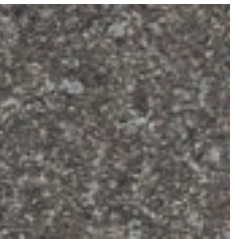
Angelite **4051**
NCS S 3010-R90B

w/r 9806
LRV 40



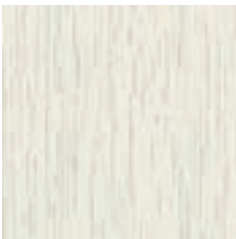
Blue Quartz **4054**
NCS S 6010-R90B

w/r 9808
LRV 17



Jetstone **4045**
NCS S 6500-N

w/r 9805
LRV 15



Pearl River **5084**
NCS S 1000-N

w/r 5084
LRV 63



Valley Rock **5086**
NCS S 7005-Y20R

w/r 5086
LRV 14



Polysafe Wood fx PUR

Technical Specification

Product Format		
Gauge	ISO 24346 (EN 428)	2.0mm
Wear Layer	ISO 24340 (EN 429)	0.70mm
Total Weight	ISO 23997 (EN 430)	2780g/m ²
Finish	PUR	
Performance Requirements		
General Performance	EN 13845	Conforms
	ASTM F1303	Type I, Grade I, Class B Backing
Use Area	ISO 10874 (EN 685)	23, 34, 43
Enhanced Slip Resistance	EN 13845	ESf
	RRL Pendulum Test	≥36 (wet test - 4S Rubber / Slider 96)
	DIN 51130 / DIN EN 16165 Ann. B	R10
	AS 4586	R10
	Surface Roughness	Rz ≥20µm
	ASTM D2047	SCOF ≥0.8
Abrasion Resistance	EN 13845	50,000 cycles
Reaction to Fire	EN 13501-1	Class Bfl-S1
	ASTM E648	Class 1
	CAN/ULC S102.2	FSV < 300; SDV < 500
	AS ISO 9239-1	>8.0kW/m ²
Static Electrical Propensity	EN 1815	≤2.0kV Classified as 'antistatic'
Residual Indentation	ASTM F970 (Modified)	≤0.005" (750 psi)
Flexibility	ASTM F137	1.5" Pass
Resistance to Light	ASTM F1515	ΔE ≤ 8.0 - Meets
Resistance to Heat	ASTM F1514	ΔE ≤ 8.0 - Meets

Sheet Size

Format	Size	Shades	Coverage per Roll
Sheet	2m x 20m (2.187 yds x 21.872 yds)	16	40m² (47.834 yds)

Sustainability		
BRE Green Guide		A+ ENP 415
GreenTag	LCA Rate Gold Plus	GreenRate level A
Generic EN 15804 EPD		Available
Recyclable		100%
Recycled Content		10%
REACH		Compliant
Indoor Air Comfort Gold		Eurofins certified product
FloorScore		Certified
Finnish M1 Classification		Certified
AgBB/ABG		Pass
Responsible Sourcing	BES 6001	Excellent

Maintenance Performance		
Resistance to Chemicals	ISO 26987 (EN 423)	Good resistance
	ASTM F925	Good resistance
Alco Hand Gels	Compatible for use with most commonly used alco-based hand gels	
Steam Cleaning	Suitable for steam cleaning on a periodic basis	
All Polyflor commercial sheet vinyl ranges provide a continuous, impervious and hygienic flooring solution which can be confidently cleaned in accordance with recommended maintenance procedures and approved maintenance products. The implementation of an effective cleaning regime is the most important defence against infection.		

Hygiene		
Bacterial Resistance	ISO 846 Part C	Does not favour growth

Polysafe Wood fx PUR

PARQUET DESIGNS



Eton Oak Parquet **3392***
plank size in sheet: 76.2 x 288.6mm
w/r 9822 LRV 24



Parish Oak Parquet **3391***
plank size in sheet: 76.2 x 288.6mm
w/r 9841 LRV 32



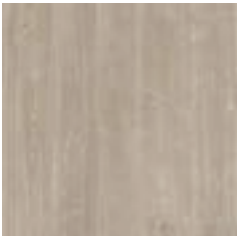
Newport Oak **3394**
plank size in sheet: 167 x 1500mm
w/r 9838 LRV 30



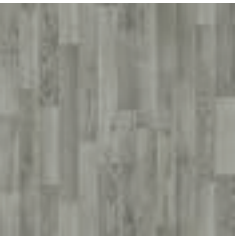
Blanched Oak **3397**
plank size in sheet: 200 x 1000mm
w/r 3113 LRV 42



Oslo Oak **3396**
plank size in sheet: 167 x 1500mm
w/r 9829 LRV 32



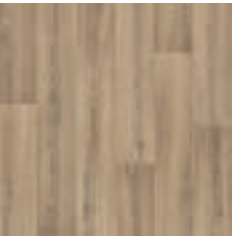
Sun Bleached Oak **3372***
plank size in sheet: 200 x 1500mm
w/r 3372 LRV 31



Silver Oak **3357***
plank size in sheet: 83 x 333/666mm
w/r 3237 LRV 23



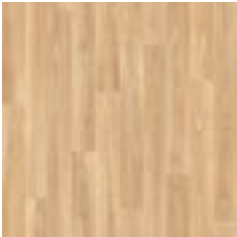
Oiled Oak **3374**
plank size in sheet: 166 x 1500mm
w/r 3374 LRV 37



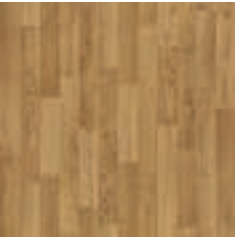
Roasted Limed Ash **3375**
plank size in sheet: 166 x 1500mm
w/r 9831 LRV 30



Tropical Pine **3376**
plank size in sheet: 166 x 1500mm
w/r 9822 LRV 22



American Oak **3387***
plank size in sheet: 100 x 1000mm
w/r 3380 LRV 37



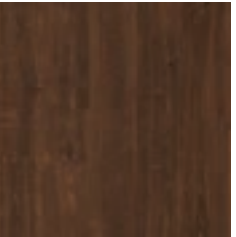
Rustic Oak **3337***
plank size in sheet: 83 x 333/666mm
w/r 3330 LRV 26



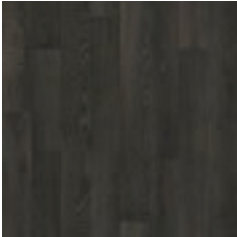
Classic Oak **3107**
plank size in sheet: 166 x 1500mm
w/r 3330 LRV 29



European Oak **3347***
plank size in sheet: 100 x 1000mm
w/r 3340 LRV 23



Aged Oak **3373***
plank size in sheet: 200 x 1500mm
w/r 9824 LRV 9



Nero Oak **3371**
plank size in sheet: 125 x 1000mm
w/r 9842 LRV 7

w/r - Weld Rod

LRV - Light Reflectance Value

*Also available in Acoustic. See page 89



Polysafe Verona PUR: Original

UK
CA
BS EN 14041
CE
EN 14041

Technical Specification

Product Format		
Gauge	ISO 24346 (EN 428)	2.0mm
Total Weight	ISO 23997 (EN 430)	2600g/m²
Finish	PUR	
Performance Requirements		
General Performance	EN 13845	Conforms
	ASTM F1303	Type II, Grade I, Class B Backing
Use Area	ISO 10874 (EN 685)	23, 34, 43
Enhanced Slip Resistance	EN 13845	ESf
	RRL Pendulum Test	≥36 (wet test - 4S Rubber / Slider 96)
	AS 4586 Appendix A	P3
	AS 4586 Appendix D	R10
	DIN 51130 / DIN EN 16165 Ann. B	R10
	Surface Roughness	Rz ≥20µm
Abrasion Resistance	ASTM D2047	SCOF ≥0.8
	EN 13845	50,000 cycles
Reaction to Fire	EN 13501-1	Class Bfl-S1
	ASTM E648	Class 1
	CAN/ULC S102.2	FSV < 300; SDV < 500
	AS ISO 9239-1	>8.0kW/m²
Static Electrical Propensity	EN 1815	≤2.0kV Classified as 'antistatic'
Residual Indentation	ASTM F970 (Modified)	≤0.005" (750 psi)
Flexibility	ASTM F137	1.5" Pass
Resistance to Light	ASTM F1515	ΔE ≤ 8.0 - Meets
Resistance to Heat	ASTM F1514	ΔE ≤ 8.0 - Meets

Sheet Size

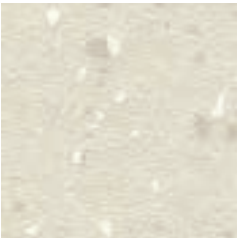
Format	Size	Shades	Coverage per Roll
Sheet	2m x 20m (2.187 yds x 21.872 yds)	18	40m ² (47.834 yds)

Sustainability		
BRE Green Guide		A+ ENP 472
GreenTag	LCA Rate Gold Plus	GreenRate level A
Generic EN 15804 EPD		Available
Recyclable		100%
Recycled Content		Contains recycled material
REACH		Compliant
Indoor Air Comfort Gold		Eurofins certified product
FloorScore		Certified
Finnish M1 Classification		Certified
AgBB/ABG		Pass
Responsible Sourcing	BES 6001	Excellent

Maintenance Performance		
Resistance to Chemicals	ISO 26987 (EN 423)	Good resistance
	ASTM F925	Good resistance
Alco Hand Gels	Compatible for use with most commonly used alco-based hand gels	
Steam Cleaning	Suitable for steam cleaning on a periodic basis	
All Polyflor commercial sheet vinyl ranges provide a continuous, impervious and hygienic flooring solution which can be confidently cleaned in accordance with recommended maintenance procedures and approved maintenance products.		
The implementation of an effective cleaning regime is the most important defence against infection.		

Hygiene		
Bacterial Resistance	ISO 846 Part C	Does not favour growth

Polysafe Verona PUR: Original



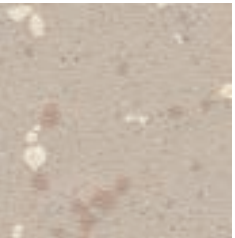
Cookie Cream **5201**
NCS S 1502-Y

w/r 5201
LRV 64



Biscotti **5212**
NCS S 3005-Y20R

w/r 5212
LRV 45



Marshmallow **5214**
NCS S 3005-Y50R

w/r 5214
LRV 45



Caramel Latte **5213**
NCS S 3010-Y40R

w/r 5213
LRV 34



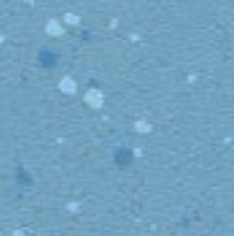
Rainstorm **5202**
NCS S 2502-G

w/r 5202
LRV 44



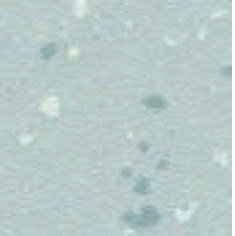
Dolphin Grey **5203**
NCS S 4500-N

w/r 5203
LRV 26



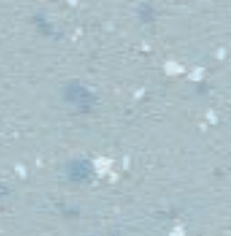
Blue Lagoon **5206**
NCS S 2030-R90B

w/r 5206
LRV 32



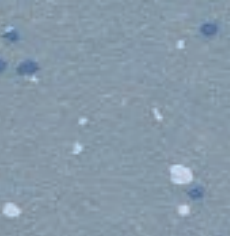
Freshmint **5209**
NCS S 2010-B30G

w/r 5209
LRV 52



Skyline **5205**
NCS S 2010-B

w/r 5205
LRV 47



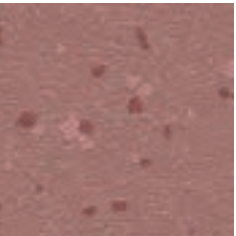
Horizon Blue **5208**
NCS S 3020-R90B

w/r 5208
LRV 31



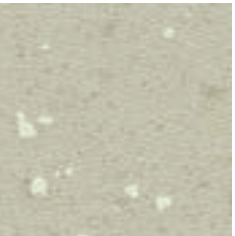
Nightfall **5207**
NCS S 6010-R90B

w/r 5207
LRV 12



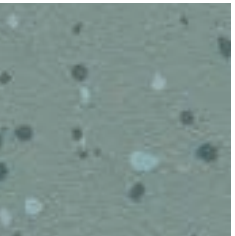
Summer Coulis **5217**
NCS S 4020-Y90R

w/r 5217
LRV 21



Oregano **5210**
NCS S 2005-G70Y

w/r 5210
LRV 48



Seagrass **5211**
NCS S 4010-B50G

w/r 5211
LRV 25



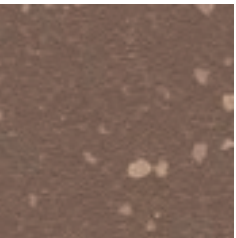
Soft Peach **5216**
NCS S 1515-Y60R

w/r 5216
LRV 47



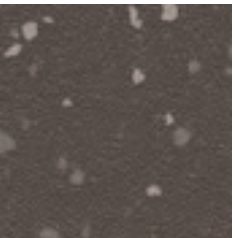
Butterscotch **5218**
NCS S 2030-Y30R

w/r 5218
LRV 35



Chocolate Chip **5215**
NCS S 6005-Y50R

w/r 5215
LRV 16



Cafe Noir **5204**
NCS S 7000-N

w/r 5204
LRV 11

w/r - Weld Rod

LRV - Light Reflectance Value

NCS - Natural Colour System



Polysafe Verona PUR: *Pure Colours*

UK
CA
BS EN 14041

CE
EN 14041

Technical Specification

Product Format		
Gauge	ISO 24346 (EN 428)	2.0mm
Total Weight	ISO 23997 (EN 430)	2600g/m²
Finish	PUR	
Performance Requirements		
General Performance	EN 13845	Conforms
	ASTM F1303	Type II, Grade I, Class B Backing
Use Area	ISO 10874 (EN 685)	23, 34, 43
Enhanced Slip Resistance	EN 13845	ESf
	RRL Pendulum Test	≥45 (wet test - 4S Rubber / Slider 96)
	DIN 51130 / DIN EN 16165 Ann. B	R11
	Surface Roughness	Rz ≥20µm
	ASTM D2047	SCOF ≥0.8
	AS 4586 Appendix A	P4
Abrasion Resistance	AS 4586 Appendix D	R11
	EN 13845	50,000 cycles
Reaction to Fire	EN 13501-1	Class Bfl-S1
	ASTM E648	Class 1
	Aus NCC Spec C1.10-3	Complies
	CAN/ULC S102.2	FSV < 300; SDV < 500
Static Electrical Propensity	AS ISO 9239-1	>8.0kW/m²
	EN 1815	≤2.0kV Classified as 'antistatic'
Residual Indentation	ASTM F970 (Modified)	≤0.005" (750 psi)
Flexibility	ASTM F137	1.5" Pass
Resistance to Light	ASTM F1515	ΔE ≤ 8.0 - Meets
Resistance to Heat	ASTM F1514	ΔE ≤ 8.0 - Meets

Sheet Size

Format	Size	Shades	Coverage per Roll
Sheet	2m x 20m (2.187 yds x 21.872 yds)	18	40m² (47.834 yds)

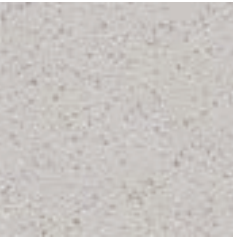
Sustainability		
BRE Green Guide		A+ ENP 472
Generic EN 15804 EPD		Available
Recyclable		100%
Recycled Content		Contains recycled material
REACH		Compliant
Indoor Air Comfort Gold		Eurofins certified product
FloorScore		Certified
Finnish M1 Classification		Certified
AgBB/ABG		Pass
Responsible Sourcing	BES 6001	Excellent

Maintenance Performance		
Resistance to Chemicals	ISO 26987 (EN 423)	Good resistance
	ASTM F925	Good resistance
Alco Hand Gels	Compatible for use with most commonly used alco-based hand gels	
Steam Cleaning	Suitable for steam cleaning on a periodic basis	

All Polyflor commercial sheet vinyl ranges provide a continuous, impervious and hygienic flooring solution which can be confidently cleaned in accordance with recommended maintenance procedures and approved maintenance products. The implementation of an effective cleaning regime is the most important defence against infection.

Hygiene		
Bacterial Resistance	ISO 846 Part C	Does not favour growth

Polysafe Verona PUR: *Pure Colours*



Rock Salt **5231**
NCS S 3000-N

w/r 9858
LRV 43



Vanilla **5221**
NCS S 1502-Y

w/r 5221
LRV 63



Mocha **5222**
NCS S 3005-Y20R

w/r 5212
LRV 43



Monsoon **5226**
NCS S 4500-N

w/r 5764
LRV 25



Glacier **5225**
NCS S 2502-B

w/r 5202
LRV 47



Almond **5223**
NCS S 3005-Y80R

w/r 5223
LRV 43



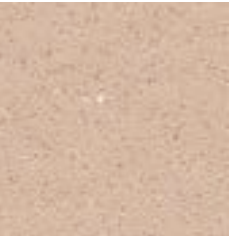
Pebble Shore **5233**
NCS S 5500-N

w/r 5233
LRV 21



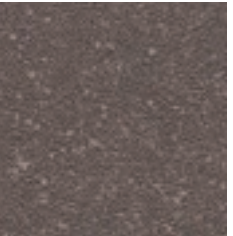
Duck Egg **5235**
NCS S 2010-B30G

w/r 5209
LRV 50



Cappuccino **5224**
NCS S 4010-Y50R

w/r 5213
LRV 33



Americano **5234**
NCS S 6502-R

w/r 5204
LRV 12



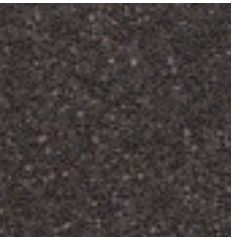
Sea Breeze **5227**
NCS S 2020-B

w/r 5205
LRV 44



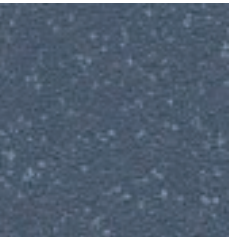
Pacific Blue **5228**
NCS S 3020-R90B

w/r 5208
LRV 29



Rich Black **5236**
NCS S 8000-N

w/r 8640
LRV 7



Midnight Blue **5238**
NCS S 6010-R90B

w/r 5207
LRV 12



Azure **5229**
NCS S 3030-R90B

w/r 5206
LRV 31



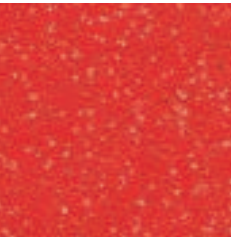
Neptune **5239**
NCS S 5040-B20G

w/r 5239
LRV 12



Lemon Drizzle **5241**
NCS S 1070-Y

w/r 9947
LRV 54



Berry Red **5232**
NCS S 2070-Y90R

w/r 5232
LRV 14

w/r - Weld Rod

LRV - Light Reflectance Value

NCS - Natural Colour System



Polysafe QuickLay PUR

Technical Specification

Product Format		
Gauge	ISO 24346 (EN 428)	2.2mm
Total Weight	ISO 23997 (EN 430)	2700g/m²
Finish	PUR	
Performance Requirements		
General Performance	EN 13845	Conforms
	ASTM F1303	Conforms
Use Area	ISO 10874 (EN 685)	23, 34, 43
Enhanced Slip Resistance	EN 13845	ESf
	AS 4586 Appendix A	P4
	AS 4586 Appendix D	R11
	RRL Pendulum Test	≥45 (wet test - 4S Rubber / Slider 96)
	DIN 51130 / DIN EN 16165 Ann. B	R11
	Surface Roughness	Rz ≥20µm
	ASTM D2047	SCOF ≥0.8
	ASTM D2047	SCOF ≥0.8
Abrasion Resistance	EN 13845	50,000 cycles
Reaction to Fire	EN 13501-1	Class Bfl-S1
	ASTM E648	Class 1
	Australian BCA Spec C1.10-3	Complies
	CAN/ULC S102.2	FSV < 300; SDV < 500
	AS ISO 9239-1	>8.0kW/m²
Static Electrical Propensity	EN 1815	≤2.0kV Classified as 'antistatic'
Residual Indentation	ISO 24343-1	≤0.10mm
	ASTM F970 (Modified)	≤0.005" (750 psi)
Flexibility	ASTM F137	1.5" Pass
Resistance to Light	ASTM F1515	ΔE ≤ 8.0 - Meets
Resistance to Heat	ASTM F1514	ΔE ≤ 8.0 - Meets
Castor Chair	ISO 4918 (EN 425)	Suitable

Sheet Size

Format	Size	Shades	Coverage per Roll
Sheet	2m x 20m (2.187 yds x 21.872 yds)	12	40m ² (47.834 yds)

Sustainability		
BRE Green Guide		A+ Generic
Generic EN 15804 EPD		Available
Recyclable & Reusable		100%
Recycled Content		Contains recycled material
REACH		Compliant
Indoor Air Comfort Gold		Eurofins certified product
FloorScore		Certified
Finnish M1 Classification		Certified
AgBB/ABG		Pass

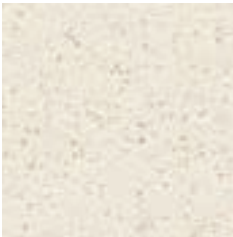
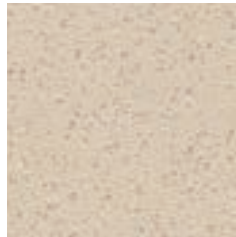
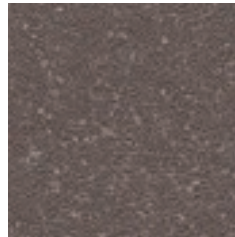




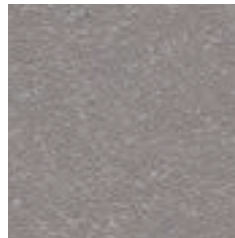




Acoustic Performance		
Impact Sound Reduction	ISO 10140-3	10dB

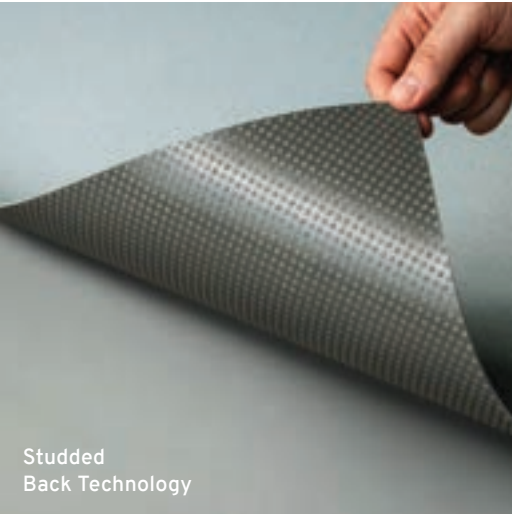
Maintenance Performance		
Resistance to Chemicals	ISO 26987 (EN 423)	Good resistance
	ASTM F925	Good resistance
Alco Hand Gels	Compatible for use with most commonly used alco-based hand gels	
Steam Cleaning	Suitable for steam cleaning on a periodic basis	

All Polyflor commercial sheet vinyl ranges provide a continuous, impervious and hygienic flooring solution which can be confidently cleaned in accordance with recommended maintenance procedures and approved maintenance products. The implementation of an effective cleaning regime is the most important defence against infection.

Hygiene		
Bacterial Resistance	ISO 846 Part C	Does not favour growth

Polysafe QuickLay PUR

									
Vanilla 6253 NCS S 1502-Y	w/r 5221 LRV 63	Mocha 6249 NCS S 3005-Y20R	w/r 5212 LRV 43	Americano 6256 NCS S 6502-R	w/r 5204 LRV 12	Rich Black 6252 NCS S 8000-N	w/r 8640 LRV 7	Rock Salt 6251 NCS S 3000-N	w/r 9858 LRV 43
									
Monsoon 6248 NCS S 4500-N	w/r 5764 LRV 25	Glacier 6241 NCS S 2502-B	w/r 5202 LRV 47	Pebble Shore 6250 NCS S 5500-N	w/r 5233 LRV 21	Sea Breeze 6254 NCS S 2020-B	w/r 5205 LRV 44	Azure 6255 NCS S 3030-R90B	w/r 5206 LRV 31
									
Pacific Blue 6244 NCS S 3020-R90B	w/r 5208 LRV 29	Midnight Blue 6245 NCS S 6010-R90B	w/r 5207 LRV 12						



Studded Back Technology



Polysafe Standard PUR

Technical Specification

Product Format		
Gauge	ISO 24346 (EN 428)	2.0mm, 2.5mm
Total Weight	ISO 23997 (EN 430)	2.0mm: 2430g/m ²
		2.5mm: 3100g/m ²
Finish	PUR	
Performance Requirements		
General Performance	EN 13845	Conforms
	ASTM F1303	Type II, Grade I, Class B Backing
Use Area	ISO 10874 (EN 685)	23, 34, 43
Enhanced Slip Resistance	EN 13845	ESf
	AS 4586	R10
	RRL Pendulum Test	≥36 (wet test - 4S Rubber / Slider 96)
	DIN 51130 / DIN EN 16165 Ann. B	R10
	Surface Roughness	Rz ≥20µm
	ASTM D2047	SCOF ≥0.8
Abrasion Resistance	EN 13845	50,000 cycles
Reaction to Fire	EN 13501-1	Class Bfl-S1
	ASTM E648	Class 1
	CAN/ULC S102.2	FSV < 300; SDV < 500
	AS ISO 9239-1	>8.0kW/m ²
Static Electrical Propensity	EN 1815	≤2.0kV Classified as 'antistatic'
Residual Indentation	ASTM F970 (Modified)	≤0.005" (750 psi)
Flexibility	ASTM F137	1.5" Pass
Resistance to Light	ASTM F1515	ΔE ≤ 8.0 - Meets
Resistance to Heat	ASTM F1514	ΔE ≤ 8.0 - Meets

Sheet Sizes

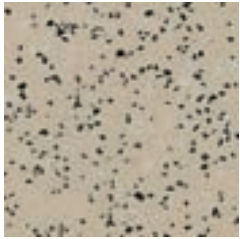
Format	Size	Shades	Coverage per Roll
Sheet	2.0mm: 2m x 20m (2.187 yds x 21.872 yds)	16	40m ² (47.834 yds)
	2.5mm: 2m x 20m (2.187 yds x 21.872 yds)	16	40m ² (47.834 yds)

Sustainability		
BRE Green Guide		A+ ENP 472
GreenTag	LCA Rate Gold Plus	GreenRate level A
Generic EN 15804 EPD		Available
Recyclable		100%
Recycled Content		Contains recycled material
REACH		Compliant
Indoor Air Comfort Gold		Eurofins certified product
FloorScore		Certified
Finnish M1 Classification		Certified
AgBB/ABG		Pass
Responsible Sourcing	BES 6001	Excellent

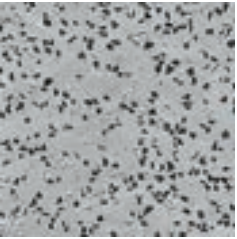
Maintenance Performance		
Resistance to Chemicals	ISO 26987 (EN 423)	Good resistance
	ASTM F925	Good resistance
Alco Hand Gels	Compatible for use with most commonly used alco-based hand gels	
Steam Cleaning	Suitable for steam cleaning on a periodic basis	
All Polyflor commercial sheet vinyl ranges provide a continuous, impervious and hygienic flooring solution which can be confidently cleaned in accordance with recommended maintenance procedures and approved maintenance products. The implementation of an effective cleaning regime is the most important defence against infection.		

Hygiene		
Bacterial Resistance	ISO 846 Part C	Does not favour growth

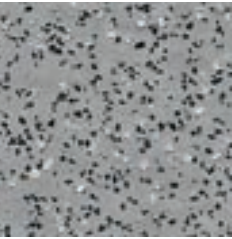
Polysafe Standard PUR



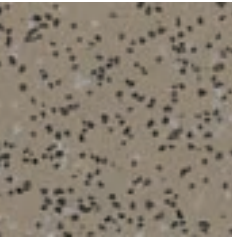
Wild Mushroom **4600** w/r 4630
NCS S 3005-Y20R LRV 39



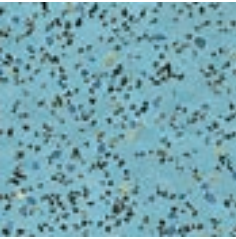
Ash Grey **4540** w/r 2090
NCS S 3502-B LRV 37



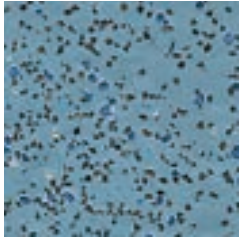
Silver Birch **4020** w/r 9200
NCS S 4500-N LRV 27



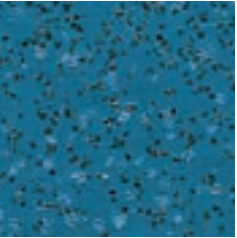
Taupe **4610** w/r 4620
NCS S 5005-Y20R LRV 24



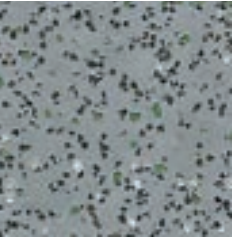
Cool Aqua **4570** w/r 4570
NCS S 3020-B10G LRV 35



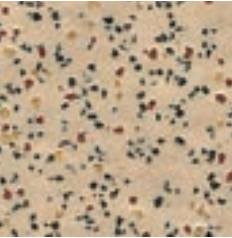
Arctic Blue **4130** w/r 4130
NCS S 4020-B LRV 25



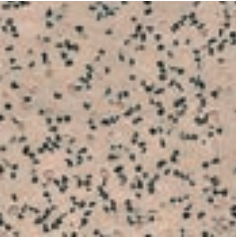
Cedar Blue **4060** w/r 9040
NCS S 5030-B LRV 14



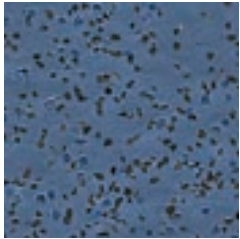
Nordic Grey **4090** w/r 8680
NCS S 5005-B20G LRV 24



Autumn Beige **4140** w/r 4140
NCS S 3010-Y30R LRV 39



Elmwood **4520** w/r 9610
NCS S 3010-Y60R LRV 39



Storm Blue **4560** w/r 4910
NCS S 5020-R80B LRV 15



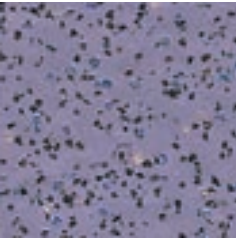
Twilight **4490** w/r 4490
NCS S 7502-B LRV 10



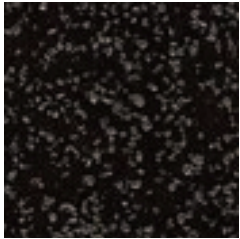
Alpine Green **4110** w/r 4110
NCS S 4010-G30Y LRV 27



Redwood **4040** w/r 9230
NCS S 3060-Y90R LRV 12



Lilac Blue **4580** w/r 4580
NCS S 4020-R60B LRV 23



Black Walnut **4150** w/r 8640
NCS S 8505-Y20R LRV 6

Polysafe Vogue Ultra PUR



Technical Specification

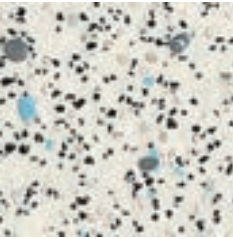
Product Format		
Gauge	ISO 24346 (EN 428)	2.0mm
Total Weight	ISO 23997 (EN 430)	2400g/m ²
Finish	PUR	
Performance Requirements		
General Performance	EN 13845	Conforms
	ASTM F1303	Type II, Grade I, Class B Backing
Use Area	ISO 10874 (EN 685)	23, 34, 43
Enhanced Slip Resistance	EN 13845	ESf
	AS 4586	R10
	RRL Pendulum Test	≥36 (wet test - 4S Rubber / Slider 96)
	DIN 51130 / DIN EN 16165 Ann. B	R10
	Surface Roughness ASTM D2047	Rz ≥20µm SCOF ≥0.8
Abrasion Resistance	EN 13845	50,000 cycles
Reaction to Fire	EN 13501-1	Class Bfl-S1
	ASTM E648	Class 1
	CAN/ULC S102.2 AS ISO 9239-1	FSV < 300; SDV < 500 >8.0kW/m ²
Static Electrical Propensity	EN 1815	≤2.0kV Classified as 'antistatic'
Residual Indentation	ASTM F970 (Modified)	≤0.005" (750 psi)
Flexibility	ASTM F137	1.5" Pass
Resistance to Light	ASTM F1515	ΔE ≤ 8.0 - Meets
Resistance to Heat	ASTM F1514	ΔE ≤ 8.0 - Meets

Sheet Size

Format	Size	Shades	Coverage per Roll
Sheet	2m x 20m (21.872 yds x 2.187 yds)	18	40m ² (47.834 yds)

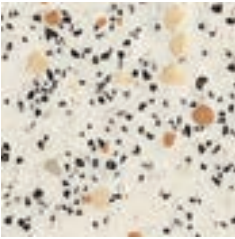
Sustainability		
BRE Green Guide		A+ ENP 472
Generic EN 15804 EPD		Available
Recyclable		100%
Recycled Content		Contains recycled material
REACH		Compliant
Indoor Air Comfort Gold		Eurofins certified product
FloorScore		Certified
Finnish M1 Classification		Certified
AgBB/ABG		Pass
Responsible Sourcing	BES 6001	Excellent
Maintenance Performance		
Resistance to Chemicals	ISO 26987 (EN 423)	Good resistance
	ASTM F925	Good resistance
Alco Hand Gels	Compatible for use with most commonly used alco-based hand gels	
Steam Cleaning	Suitable for steam cleaning on a periodic basis	
All Polyflor commercial sheet vinyl ranges provide a continuous, impervious and hygienic flooring solution which can be confidently cleaned in accordance with recommended maintenance procedures and approved maintenance products.		
The implementation of an effective cleaning regime is the most important defence against infection.		
Hygiene		
Bacterial Resistance	ISO 846 Part C	Does not favour growth

Polysafe Vogue Ultra PUR



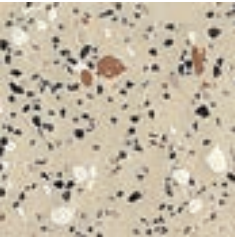
Snowstorm **4835**
NCS S 2500-N

w/r 4930
LRV 49



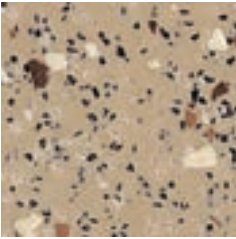
Bisque **4860**
NCS S 2002-Y50R

w/r 4860
LRV 48



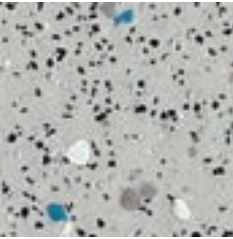
Barley **5500**
NCS S 3005-Y20R

w/r 5500
LRV 42



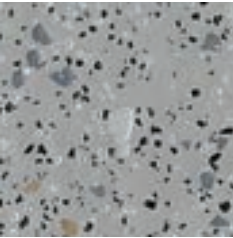
Toffee **4825**
NCS S 4010-Y30R

w/r 4825
LRV 30



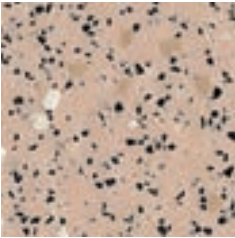
Whirlpool **4805**
NCS S 3500-N

w/r 5570
LRV 37



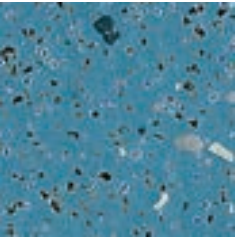
Woodland Grey **4770**
NCS S 4500-N

w/r 9120
LRV 30



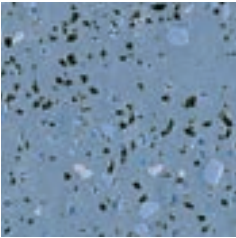
Oystershell **4800**
NCS S 3010-Y60R

w/r 2010
LRV 41



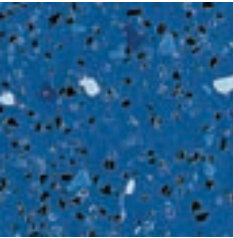
Marine **4870**
NCS S 4030-B

w/r 4700
LRV 22



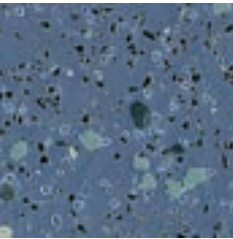
Bluebell **5510**
NCS S 4020-R80B

w/r 5510
LRV 23



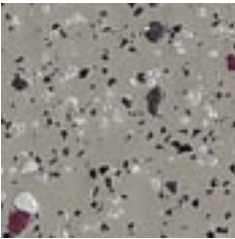
Seawater **5490**
NCS S 5030-R90B

w/r 5490
LRV 15



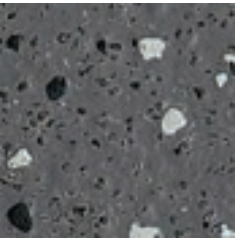
Steel Blue **4740**
NCS S 5020-R80B

w/r 4910
LRV 14



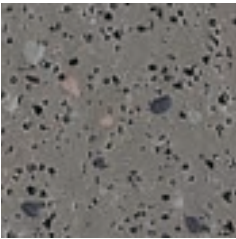
Winter Dusk **4730**
NCS S 5500-N

w/r 9120
LRV 23



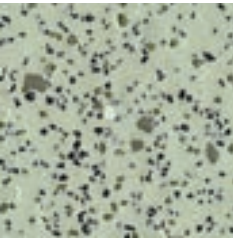
Blackbird **5560**
NCS S 7500-N

w/r 5560
LRV 11



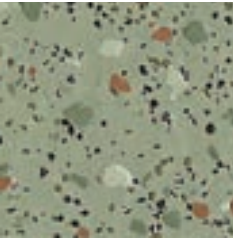
Night sky **4760**
NCS S 6500-N

w/r 4760
LRV 17



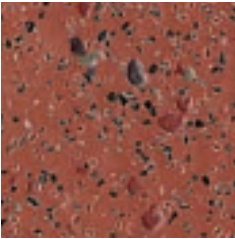
Grasshopper **5540**
NCS S 3010-G30Y

w/r 5540
LRV 37



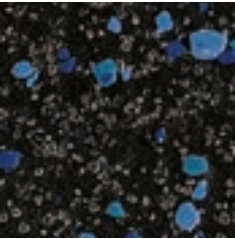
Forest Pine **4500**
NCS S 5005-G50Y

w/r 4350
LRV 24



Firestar **4790**
NCS S 5030-Y80R

w/r 4640
LRV 16



Galactic **4815**
NCS S 8502-B

w/r 8640
LRV 6



Polysafe Mosaic PUR

Technical Specification

Product Format		
Gauge	ISO 24346 (EN 428)	2.0mm
Wear Layer	ISO 24340 (EN 429)	0.70mm
Total Weight	ISO 23997 (EN 430)	2400g/m²
Finish	PUR	
Performance Requirements		
General Performance	EN13845	Conforms
	ASTM F1303	Conforms
Use Area	ISO 10874 (EN 685)	23, 34, 43
Enhanced Slip Resistance	EN 13845	ESf
	AS 4586	R10
	RRL Pendulum Test	≥36 (wet test - 4S Rubber / Slider 96)
Slip Resistance	DIN 51130 /	R10
	DIN EN 16165 Ann. B	
	Surface Roughness	Rz ≥20µm
	ASTM D2047	SCOF ≥0.8
Abrasion Resistance	EN 13845	50,000 cycles
Reaction to Fire	EN 13501-1	Class Bfl-S1
	ASTM E648	Class 1
	CAN/ULC S102.2	FSV < 300; SDV < 500
	AS ISO 9239-1	>8.0kW/m²
Static Electrical Propensity	EN 1815	≤2.0kV Classified as 'antistatic'
Flexibility	ASTM F137	Conforms
Resistance to Light	ASTM F1515	ΔE ≤ 8.0 - Meets
Resistance to Heat	ASTM F1514	ΔE ≤ 8.0 - Meets

Sheet Size

Format	Size	Shades	Coverage per Roll
Sheet	2m x 20m (2.187 yds x 21.872 yds)	6	40m² (47.834 yds)

Sustainability		
BRE Green Guide		A+ ENP 472
Generic EN 15804 EPD		Available
Recyclable		100%
Recycled Content		Contains recycled material
REACH		Compliant
Indoor Air Comfort Gold		Eurofins certified product
FloorScore		Certified
Finnish M1 Classification		Certified
AgBB/ABG		Pass
Responsible Sourcing	BES 6001	Excellent

Maintenance Performance		
Resistance to Chemicals	ISO 26987 (EN 423)	Good resistance
	ASTM F925	Good resistance
Alco Hand Gels	Compatible for use with most commonly used alco-based hand gels	
Steam Cleaning	Suitable for steam cleaning on a periodic basis	
All Polyflor commercial sheet vinyl ranges provide a continuous, impervious and hygienic flooring solution which can be confidently cleaned in accordance with recommended maintenance procedures and approved maintenance products.		
The implementation of an effective cleaning regime is the most important defence against infection.		

Polysafe Mosaic PUR



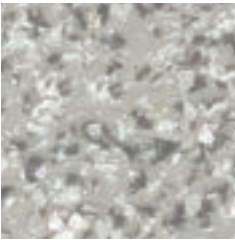
Graphite Pearl **4165**
NCS S 6500-N w/r 4165 LRV 18



Earthstone **4155**
NCS S 3010-Y40R w/r 4155 LRV 39



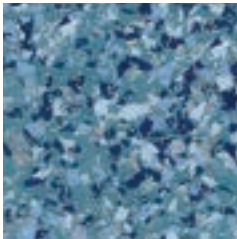
South Sea **4175**
NCS S 5020-R90B w/r 4175 LRV 19



Grey Fusion **4105**
NCS S 3502-Y w/r 4105 LRV 39



Orient Grey **4135**
NCS S 5500-N w/r 4135 LRV 23



Freshwater **4145**
NCS S 4020-B10G w/r 4145 LRV 25



Safety floorcoverings are designed to provide increased traction underfoot, thereby reducing the potential of slipping in wet areas or locations subjected to regular spillage, standing water or contaminants.

Polysafe ranges incorporate the use of slip resistant particles such as silicon carbide, coloured quartz, aluminium oxide and natural recycled aggregates within the vinyl to ensure consistent, sustainable performance.

Use areas which are commonly subjected to contaminants such as oils, soaps, grease, fats, food debris or constant spillages of water require extra care when selecting flooring.



Apex 55	44
Apex	46
Quattro PUR	50
Hydro Evolve	52
Hydro	54

TECHNICAL SPECIFICATIONS

TECHNICAL DATA	STANDARDS	Polysafe Apex 55	Polysafe Apex
----------------	-----------	------------------	---------------

Product Format

Gauge	ISO 24346 (EN 428)	3mm	2.5mm
Sheet Size	ISO 24341 (EN 426)	2m x 15m	2m x 20m
Total Weight	ISO 23997 (EN 430)	3600g/m²	3000g/m²

Performance Requirements

General Performance	EN 13845	Conforms	Conforms
	ASTM F1303	Type II, Grade I, Class B Backing	Conforms
Use Area	ISO 10874 (EN 685)	23, 33, 43	23, 34, 43
Enhanced Slip Resistance	EN 13845	ESf	ESb & ESf
	RRL Pendulum Test	≥55 (wet test - 4S Rubber / Slider 96)	≥45 (wet test - 4S Rubber / Slider 96)
	DIN 51097 / DIN EN 16165 Ann. A	Class B	Class B
	DIN 51130 / DIN EN 16165 Ann. B	R12	R12
Abrasion Resistance	EN 13845	50,000 cycles	50,000 cycles
Reaction to Fire	EN 13501-1	Class Bfl-S1	Class Bfl-S1
	ASTM E648	Class 1	Class 1
	CAN/ULC S102.2	FSV < 300; SDV < 500	-
Static Electrical Propensity	EN 1815	≤2.0kV Classified as 'antistatic'	≤2.0kV Classified as 'antistatic'
Water Tightness	EN 13553	-	Annex A

Sustainability

BRE Green Guide	A+ ENP 472	A+ ENP 472
Indoor Air Comfort Gold	Eurofins certified product	Eurofins certified product
FloorScore	Certified	Certified
Finnish M1 Classification	Certified	Certified
AgBB/ABG	Pass	Pass
Responsible Sourcing	BES 6001	Excellent

Maintenance Performance

Resistance to Chemicals	ISO 26987 (EN 423)	Good resistance	Good resistance
-------------------------	--------------------	-----------------	-----------------

All Polyflor commercial sheet vinyl ranges provide a continuous, impervious and hygienic flooring solution which can be confidently cleaned in accordance with recommended maintenance procedures and approved maintenance products. The implementation of an effective cleaning regime is the most important defence against infection.



Products in this category are designed to offer maximum slip resistance in extreme conditions, due to continuous contamination of the floor.



Polysafe Apex 55

Technical Specification

Product Format		
Gauge	ISO 24346 (EN 428)	3.0mm
Total Weight	ISO 23997 (EN 430)	3600g/m ²
Performance Requirements		
General Performance	EN 13845	Conforms
	ASTM F1303	Type II, Grade I, Class B Backing
Use Area	ISO 10874 (EN 685)	23, 34, 43
Enhanced Slip Resistance	EN 13845	ESf
	AS 4586	R12
	RRL Pendulum Test	≥ 55 (wet test - 4S Rubber / Slider 96)
	DIN 51130 / DIN EN 16165 Ann. B	R12
Abrasion Resistance	UNE-ENV 12633	Class 3 (Slider 96)
	EN 13845	50,000 cycles
Reaction to Fire	EN 13501-1	Class Bfl-S1
	ASTM E648	Class 1
	CAN/ULC S102.2	FSV < 300; SDV < 500
	AS ISO 9239-1	>8.0kW/m ²
Static Electrical Propensity	EN 1815	≤2.0kV Classified as 'antistatic'
Residual Indentation	ASTM F970 (Modified)	≤0.005" (750 psi)
Resistance to Light	ASTM F1515	ΔE ≤ 8.0 - Meets

Sheet Size

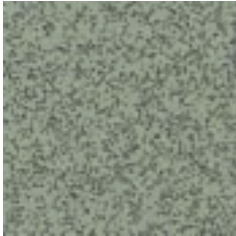
Format	Size	Shades	Coverage per Roll
Sheet	2m x 15m (2.187 yds x 16.404 yds)	8	30m ² (32.808 yds)

Sustainability		
BRE Green Guide		A+ ENP 472
GreenTag	LCA Rate Silver Plus	GreenRate level A
Generic EN 15804 EPD		Available
Recyclable		100%
Recycled Content		Contains recycled material
REACH		Compliant
Indoor Air Comfort Gold		Eurofins certified product
FloorScore		Certified
Finnish M1 Classification		Certified
AgBB/ABG		Pass
Responsible Sourcing	BES 6001	Excellent

Maintenance Performance		
Resistance to Chemicals	ISO 26987 (EN 423)	Good resistance
	ASTM F925	Good resistance
Alco Hand Gels	Compatible for use with most commonly used alco-based hand gels	
Steam Cleaning	Suitable for steam cleaning on a periodic basis	
All Polyflor commercial sheet vinyl ranges provide a continuous, impervious and hygienic flooring solution which can be confidently cleaned in accordance with recommended maintenance procedures and approved maintenance products.		
The implementation of an effective cleaning regime is the most important defence against infection.		

Hygiene		
Bacterial Resistance	ISO 846 Part C	Does not favour growth

Polysafe Apex 55



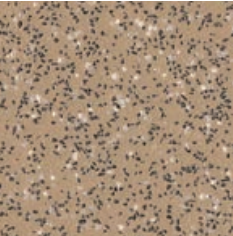
Green Quarts **4201**
NCS S 5005-G50Y

w/r 4350
LRV 24



Breccia **4204**
NCS S 5010-R90B

w/r 4670
LRV 18



Sandstone **4207**
NCS S 4010-Y30R

w/r 4207
LRV 28



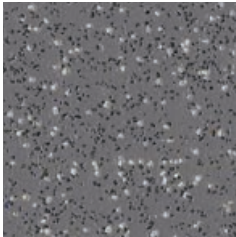
SILTSTONE **4205**
NCS S 5005-Y80R

w/r 4205
LRV 23



Chromite **4202**
NCS S 6500-N

w/r 4760
LRV 15



Basanite **4208**
NCS S 6005-R80B

w/r 4208
LRV 19



Biotite **4203**
NCS S 8000-N

w/r 8640
LRV 6



Red Ochre **4206**
NCS S 5030-Y80R

w/r 4206
LRV 13

w/r - Weld Rod

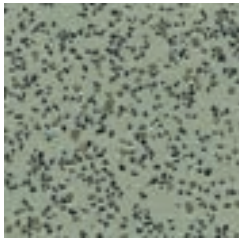
LRV - Light Reflectance Value

NCS - Natural Colour System



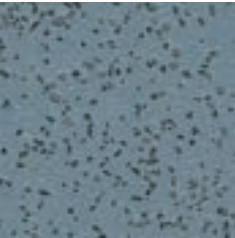
Polysafe Apex

Polysafe Apex



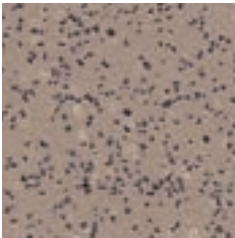
Green Quartz **4201**
NCS S 5005-G50Y

w/r 4350
LRV 24



Breccia **4204**
NCS S 5010-R90B

w/r 4670
LRV 18



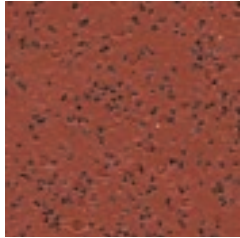
Siltstone **4205**
NCS S 5005-Y80R

w/r 4205
LRV 23



Chromite **4202**
NCS S 6500-N

w/r 4760
LRV 15



Red Ochre **4206**
NCS S 5030-Y80R

w/r 4206
LRV 13



Biotite **4203**
NCS S 8000-N

w/r 8640
LRV 6

Technical Specification

Product Format		
Gauge	ISO 24346 (EN 428)	2.5mm
Total Weight	ISO 23997 (EN 430)	3150g/m²
Performance Requirements		
General Performance	EN 13845	Conforms
	ASTM F1303	Type II, Grade I, Class B Backing
Use Area	ISO 10874 (EN 685)	23, 34, 43
Enhanced Slip Resistance	EN 13845	ESf
	AS 4586	R12
	RRL Pendulum Test	≥45 (wet test - 4S Rubber / Slider 96)
	DIN 51130 / DIN EN 16165 Ann. B	R12
Abrasion Resistance	UNE-ENV 12633	Class 3 (Slider 96)
Reaction to Fire	EN 13845	50,000 cycles
	EN 13501-1	Class Bfl-S1
	ASTM E648	Class 1
	CAN/ULC S102.2	FSV < 300; SDV < 500
Static Electrical Propensity	AS ISO 9239-1	>8.0kW/m²
Static Electrical Propensity	EN 1815	≤2.0kV Classified as 'antistatic'
Residual Indentation	ASTM F970 (Modified)	≤0.005" (750 psi)
Resistance to Light	ASTM F1515	ΔE ≤ 8.0 - Meets

Sustainability		
BRE Green Guide		A+ ENP 472
GreenTag	LCA Rate Silver Plus	GreenRate level A
Generic EN 15804 EPD		Available
Recyclable		100%
Recycled Content		Contains recycled material
REACH		Compliant
Indoor Air Comfort Gold		Eurofins certified product
FloorScore		Certified
Finnish M1 Classification		Certified
AgBB/ABG		Pass
Responsible Sourcing	BES 6001	Excellent

Maintenance Performance		
Resistance to Chemicals	ISO 26987 (EN 423)	Good resistance
	ASTM F925	Good resistance
Alco Hand Gels	Compatible for use with most commonly used alco-based hand gels	
Steam Cleaning	Suitable for steam cleaning on a periodic basis	

All Polyflor commercial sheet vinyl ranges provide a continuous, impervious and hygienic flooring solution which can be confidently cleaned in accordance with recommended maintenance procedures and approved maintenance products. The implementation of an effective cleaning regime is the most important defence against infection.

Hygiene		
Bacterial Resistance	ISO 846 Part C	Does not favour growth

Sheet Size

Format	Size	Shades	Coverage per Roll
Sheet	2m x 20m (2.187 yds x 21.872 yds)	6	40m² (47.834 yds)

TECHNICAL SPECIFICATIONS: WET ROOMS

TECHNICAL DATA	STANDARDS	Polysafe Quattro PUR	Polysafe Hydro Evolve	Polysafe Hydro
----------------	-----------	----------------------	-----------------------	----------------

Product Format

Gauge	ISO 24346 (EN 428)	2.0mm	2.0mm	2.0mm
Sheet Size	ISO 24341 (EN 426)	2m x 20m (2.187 yds x 21.872 yds)	2m x 20m (2.187 yds x 21.872 yds)	2m x 20m (2.187 yds x 21.872 yds)
Total Weight	ISO 23997 (EN 430)	2700g/m²	2960g/m²	2910g/m²
Finish		PUR	-	-

Performance Requirements

General Performance	EN 13845	Conforms	Conforms	Conforms
	ASTM F1303	Type II, Grade I, Class B Backing	Type II, Grade I, Class B Backing	Type II, Grade I, Class B Backing
Use Area	ISO 10874 (EN 685)	23, 34, 43	23, 34, 43	23, 34, 43
Enhanced Slip Resistance	EN 13845	ESb & ESf	ESb & ESf	ESb & ESf
	RRL Pendulum Test	≥50 (wet test - 4S Rubber / Slider 96)	≥36 (wet test - Slider 55/96)	≥36 (wet test - Slider 55/96)
	DIN 51097 / DIN EN 16165 Ann. A	Class B	Class B	Class B
	DIN 51130 / DIN EN 16165 Ann. B	R11	R10	R10
	Surface Roughness	Rz ≥20µm	Rz ≥20µm	Rz ≥20µm
	ASTM D2047	SCOF ≥0.8	SCOF ≥0.8	SCOF ≥0.8
Abrasion Resistance	EN 13845	50,000 cycles	50,000 cycles	50,000 cycles
Reaction to Fire	EN 13501-1	Class Bfl-S1	Class Bfl-S1	Class Bfl-S1
	ASTM E648	Class 1	Class 1	Class 1
	CAN/ULC S102.2	FSV < 300; SDV < 500	FSV < 300; SDV < 500	FSV < 300; SDV < 500
Static Electrical Propensity	EN 1815	≤2.0kV Classified as 'antistatic'	≤2.0kV Classified as 'antistatic'	≤2.0kV Classified as 'antistatic'
Water Tightness	EN 13553	Annex A	Annex A	Annex A

Sustainability

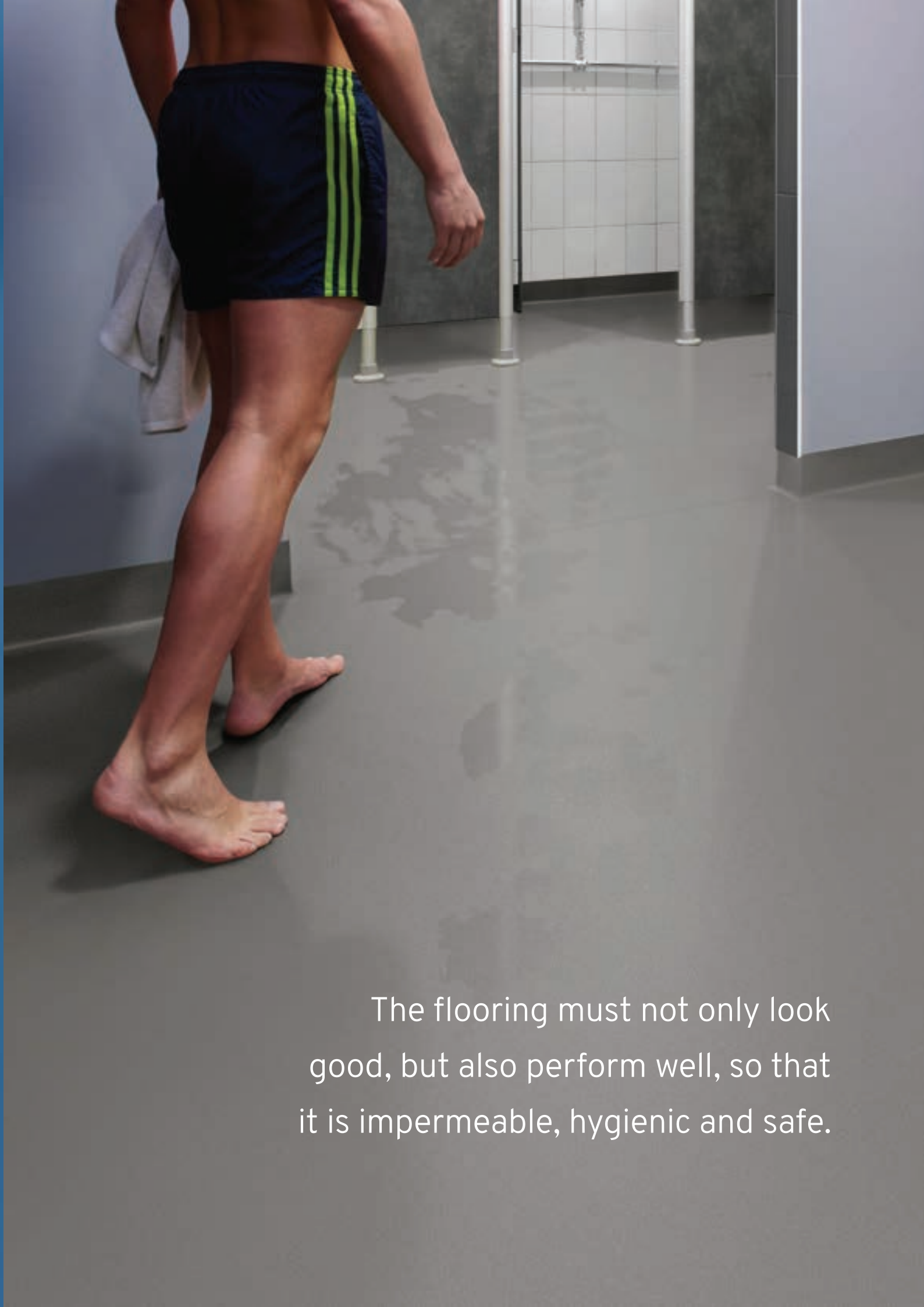
BRE Green Guide		A+ ENP 472	A+ ENP 472	A+ ENP 472
Indoor Air Comfort Gold		Eurofins certified product	Eurofins certified product	Eurofins certified product
FloorScore		Certified	Certified	Certified
Finnish M1 Classification		Certified	Certified	Certified
AgBB/ABG		Pass	Pass	Pass
Responsible Sourcing	BES 6001	Excellent	Excellent	Excellent

Maintenance Performance

Resistance to Chemicals	ISO 26987 (EN 423)	Good resistance	Good resistance	Good resistance
-------------------------	--------------------	-----------------	-----------------	-----------------

All Polyflor commercial sheet vinyl ranges provide a continuous, impervious and hygienic flooring solution which can be confidently cleaned in accordance with recommended maintenance procedures and approved maintenance products. The implementation of an effective cleaning regime is the most important defence against infection.

The wet slip resistance across all Polysafe products is sustainable throughout the guaranteed life of the product, with strict adherence to Health & Safety Executive (HSE) guidelines.



The flooring must not only look good, but also perform well, so that it is impermeable, hygienic and safe.



Polysafe Quattro PUR



Technical Specification

Product Format		
Gauge	ISO 24346 (EN 428)	2.0mm
Total Weight	ISO 23997 (EN 430)	2700g/m²
Finish	PUR	
Performance Requirements		
General Performance	EN 13845	Conforms
	ASTM F1303	Type II, Grade I, Class B Backing
Use Area	ISO 10874 (EN 685)	23, 34, 43
Enhanced Slip Resistance	EN 13845	ESb & ESf
	RRL Pendulum Test	≥50 (wet test - 4S Rubber / Slider 96)
	DIN 51097 /	Class B
	DIN EN 16165 Ann. A	
	DIN 51130 /	R11
	DIN EN 16165 Ann. B	
	Surface Roughness	Rz ≥20µm
	ASTM D2047	SCOF ≥0.8
	AS 4586 Appendix A	P4
	AS 4586 Appendix C	Class B
	AS 4586 Appendix D	R11
Abrasion Resistance	EN 13845	50,000 cycles
Reaction to Fire	EN 13501-1	Class Bfl-S1
	ASTM E648	Class 1
	Australian BCA Spec C1.10-3	Complies
	CAN/ULC S102.2	FSV < 300; SDV < 500
	AS ISO 9239-1	>8.0kW/m²
Static Electrical Propensity	EN 1815	≤2.0kV Classified as 'antistatic'
Water Tightness	EN 13553	Annex A
Residual Indentation	ASTM F970 (Modified)	≤0.005" (750 psi)

Performance Requirements (Continued)		
Flexibility	ASTM F137	1.5" Pass
Resistance to Light	ASTM F1515	ΔE ≤ 8.0 - Meets
Resistance to Heat	ASTM F1514	ΔE ≤ 8.0 - Meets

Sustainability		
BRE Green Guide		A+ ENP 472
GreenTag	LCA Rate Gold Plus	GreenRate level A
Generic EN 15804 EPD		Available
Recyclable		100%
Recycled Content		Contains recycled material
REACH		Compliant
Indoor Air Comfort Gold		Eurofins certified product
FloorScore		Certified
Finnish M1 Classification		Certified
AqBB/ABG		Pass
Responsible Sourcing	BES 6001	Excellent

Maintenance Performance		
Resistance to Chemicals	ISO 26987 (EN 423)	Good resistance
	ASTM F925	Good resistance
Alco Hand Gels	Compatible for use with most commonly used alco-based hand gels	
Steam Cleaning	Suitable for steam cleaning on a periodic basis	
All Polyflor commercial sheet vinyl ranges provide a continuous, impervious and hygienic flooring solution which can be confidently cleaned in accordance with recommended maintenance procedures and approved maintenance products.		
The implementation of an effective cleaning regime is the most important defence against infection.		
Hygiene		
Bacterial Resistance	ISO 846 Part C	Does not favour growth

Sheet Size

Format	Size	Shades	Coverage per Roll
Sheet	2m x 20m (2.187 yds x 21.872 yds)	12	40m² (47.834 yds)

Polysafe Quattro PUR



Chalk Dune **5766**
NCS S 1502-Y50R

w/r 5766
LRV 60



Lunar Shell **5772**
NCS S 1502-Y

w/r 5772
LRV 64



Barley Cove **5761**
NCS S 3005-Y50R

w/r 5212
LRV 47



Truffle Shore **5762**
NCS S 5005-Y50R

w/r 5762
LRV 24



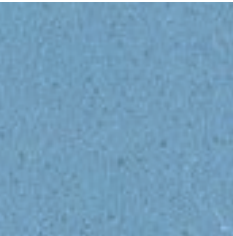
Sea Spray **5763**
NCS S 3000-N

w/r 5202
LRV 49



Sea Mist **5768**
NCS S 2010-B

w/r 5205
LRV 46



Calm Azure **5770**
NCS S 2030-R90B

w/r 5206
LRV 31



Deep Lagoon **5771**
NCS S 6010-R90B

w/r 5207
LRV 12



Cool Pebble **5767**
NCS S 3000-N

w/r 2090
LRV 46



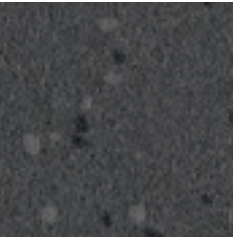
Slate Haze **5773**
NCS S 5000-N

w/r 5764
LRV 26



Coastal Flint **5764**
NCS S 4500-N

w/r 5764
LRV 26



Granite Sky **5765**
NCS S 7502-B

w/r 4490
LRV 10

w/r - Weld Rod

LRV - Light Reflectance Value

NCS - Natural Colour System



Polysafe Hydro Evolve

Technical Specification

Product Format		
Gauge	ISO 24346 (EN 428)	2.0mm
Total Weight	ISO 23997 (EN 430)	2960g/m ²
Performance Requirements		
General Performance	EN 13845	Conforms
	ASTM F1303	Type II, Grade I, Class B
Use Area	ISO 10874 (EN 685)	23, 34, 43
	EN 13845	ESb & ESf
Enhanced Slip Resistance	RRL Pendulum Test	≥36 (wet test - Slider 55/96)
	DIN 51097 /	Class B
	DIN EN 16165 Ann. A	R10
	DIN 51130 /	
	DIN EN 16165 Ann. B	
	Surface Roughness	
Abrasion Resistance	ASTM D2047	Rz ≥20µm
	AS 4586 Part C	SCOF ≥0.8
Reaction to Fire	EN 13845	Class B
	EN 13501-1	50,000 cycles
	ASTM E648	Class Bfl-S1
	CAN/ULC S102.2	Class 1
Static Electrical Propensity	AS ISO 9239-1	FSV < 300; SDV < 500
	EN 1815	>8.0kW/m ²
Water Tightness	EN 13553	≤2.0kV Classified as 'antistatic'
Residual Indentation	ASTM F970 (Modified)	Annex A
Flexibility	ASTM F137	≤0.005" (750 psi)
Resistance to Light	ASTM F1515	1.5" Pass
Resistance to Heat	ASTM F1514	ΔE ≤ 8.0 - Meets

Sheet Size

Format	Size	Shades	Coverage per Roll
Sheet	2m x 20m (21.872 yds x 2.187 yds)	8	40m ² (47.834 yds)

Sustainability		
BRE Green Guide		A+ ENP 472
Generic EN 15804 EPD		Available
Recyclable		100%
Recycled Content		Contains recycled material
REACH		Compliant
Indoor Air Comfort Gold		Eurofins certified product
FloorScore		Certified
Finnish M1 Classification		Certified
AgBB/ABG		Pass
Responsible Sourcing	BES 6001	Excellent

Maintenance Performance		
Resistance to Chemicals	ISO 26987 (EN 423)	Good resistance
	ASTM F925	Good resistance
Alco Hand Gels	Compatible for use with most commonly used alco-based hand gels	
Steam Cleaning	Suitable for steam cleaning on a periodic basis	

All Polyflor commercial sheet vinyl ranges provide a continuous, impervious and hygienic flooring solution which can be confidently cleaned in accordance with recommended maintenance procedures and approved maintenance products. The implementation of an effective cleaning regime is the most important defence against infection.

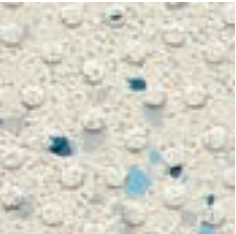
Hygiene		
Bacterial Resistance	ISO 846 Part C	Does not favour growth

Polysafe Hydro Evolve



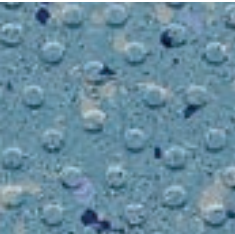
Tigris **4257**
NCS S 4500-N

w/r 4257
LRV 28



Indus **4251**
NCS S 1502-Y

w/r 4251
LRV 58



Adriatic **4258**
NCS S 3030-B

w/r 4258
LRV 27



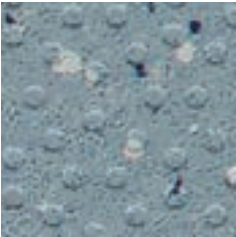
Colorado **4253**
NCS S 3000-N

w/r 4253
LRV 44



Black Volta **4255**
NCS S 8000-N

w/r 4255
LRV 6



Blue Nile **4256**
NCS S 3010-R90B

w/r 4256
LRV 34



Amazon **4252**
NCS S 1502-Y50R

w/r 4252
LRV 59



Danube **4254**
NCS S 2010-Y60R

w/r 4254
LRV 42

w/r - Weld Rod

LRV - Light Reflectance Value

NCS - Natural Colour System



Polysafe Hydro

UK
CA
BS EN 14041

CE
EN 14041

Technical Specification

Product Format		
Gauge	ISO 24346 (EN 428)	2.0mm
Total Weight	ISO 23997 (EN 430)	2910g/m²
Performance Requirements		
General Performance	EN 13845	Conforms
	ASTM F1303	Type II, Grade I, Class B
Use Area	ISO 10874 (EN 685)	23, 34, 43
	EN 13845	ESb & ESf
Enhanced Slip Resistance	RRL Pendulum Test	≥36 (wet test - Slider 55/96)
	DIN 51097 /	Class B
	DIN EN 16165 Ann. A	
	DIN 51130 /	R10
	DIN EN 16165 Ann. B	
	Surface Roughness	Rz ≥20µm
Abrasion Resistance	ASTM D2047	SCOF ≥0.8
	AS 4586 Appendix C	Class B
Reaction to Fire	EN 13845	50,000 cycles
	EN 13501-1	Class Bfl-S1
Static Electrical Propensity	ASTM E648	Class 1
	CAN/ULC S102.2	FSV < 300; SDV < 500
Water Tightness	EN 1815	≤2.0kV Classified as 'antistatic'
Residual Indentation	EN 13553	Annex A
Flexibility	ASTM F970 (Modified)	≤0.005" (750 psi)
Resistance to Light	ASTM F137	1.5" Pass
Resistance to Heat	ASTM F1515	ΔE ≤ 8.0 - Meets
	ASTM F1514	ΔE ≤ 8.0 - Meets

Sheet Size

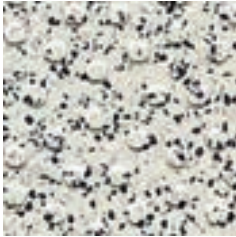
Format	Size	Shades	Coverage per Roll
Sheet	2m x 20m (21.872 yds x 2.187 yds)	8	40m² (47.834 yds)

Sustainability		
BRE Green Guide		A+ ENP 472
Generic EN 15804 EPD		Available
Recyclable		100%
Recycled Content		Contains recycled material
REACH		Compliant
Indoor Air Comfort Gold		Eurofins certified product
FloorScore		Certified
Finnish M1 Classification		Certified
AgBB/ABG		Pass
Responsible Sourcing	BES 6001	Excellent

Maintenance Performance		
Resistance to Chemicals	ISO 26987 (EN 423)	Good resistance
	ASTM F925	Good resistance
Alco Hand Gels	Compatible for use with most commonly used alco-based hand gels	
Steam Cleaning	Suitable for steam cleaning on a periodic basis	
All Polyflor commercial sheet vinyl ranges provide a continuous, impervious and hygienic flooring solution which can be confidently cleaned in accordance with recommended maintenance procedures and approved maintenance products. The implementation of an effective cleaning regime is the most important defence against infection.		

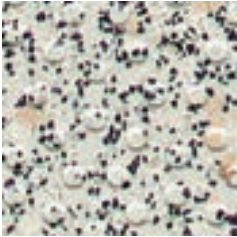
Hygiene		
Bacterial Resistance	ISO 846 Part C	Does not favour growth

Polysafe Hydro



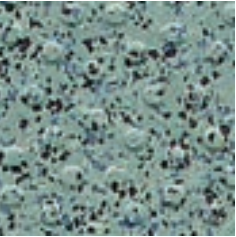
White Stone **H4930**
NCS S 2000-N

w/r 4930
LRV 44



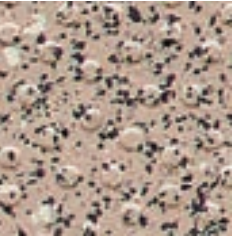
Bisque **H4860**
NCS S 2002-Y50R

w/r 4860
LRV 46



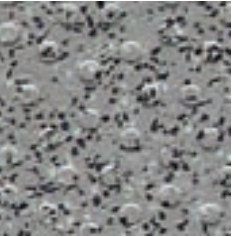
Sheared Slate **H4960**
NCS S 4010-B50G

w/r 4960
LRV 26



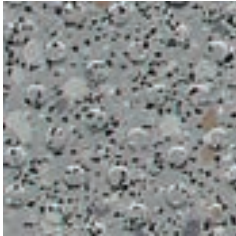
Oystershell **H4800**
NCS S 3010-Y60R

w/r 2010
LRV 34



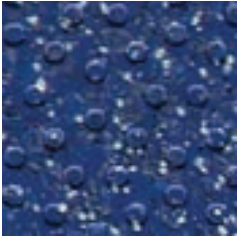
Tempered Steel **H4940**
NCS S 4502-B

w/r 4940
LRV 25



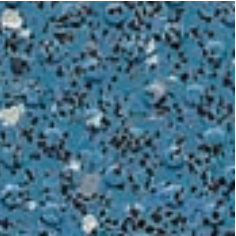
Woodland Grey **H4770**
NCS S 4500-N

w/r 9120
LRV 28



Blue Forge **H4850**
NCS S 5030-R70B

w/r 4850
LRV 9



Marine **H4870**
NCS S 4030-B

w/r 4700
LRV 19

Ideally suited for use in commercial buildings where sound insulation and slip resistance are important requirements.

Examples may include classrooms, corridors, circulation areas in multi-storey dwellings.

Typical use areas are those which are normally dry but have risks of water spillage. Example areas are found within schools, universities, student accommodation, hospitals, aged care, social housing and public buildings with heavy footfall.



Polysafe Wood fx Acoustix PUR

UK
CA
BS EN 14041

CE
EN 14041

Technical Specification

Product Format		
Gauge	ISO 24346 (EN 428)	3.7mm
Wear Layer	ISO 24340 (EN 429)	0.65mm
Total Weight	ISO 23997 (EN 430)	2670g/m²
Finish	PUR	
Performance Requirements		
General Performance	ISO 11638 (EN 651)	Conforms
Use Area	ISO 10874 (EN 685)	23, 34, 42
Enhanced Slip Resistance	EN 13845	ESf
	AS 4586	R10
	RRL Pendulum Test	≥36 (wet test - 4S Rubber / Slider 96)
	Surface Roughness	Rz ≥20µm
Abrasion Resistance	EN 13845	50,000 cycles
Reaction to Fire	EN 13501-1	Class Bfl-S1
	ASTM E648	Class 1
	CAN/ULC S102.2	FSV < 300; SDV < 500
Static Electrical Propensity	EN 1815	≤2.0kV Classified as 'antistatic'
Residual Indentation	ISO 24343-1	≤0.20mm

Sustainability		
BRE Green Guide		A+ ENP 415
Generic EN 15804 EPD		Available
Recyclable		100%
Recycled Content		10%
REACH		Compliant
Indoor Air Comfort Gold		Eurofins certified product
FloorScore		Certified
AqBB/ABG		Pass
Responsible Sourcing	BES 6001	Excellent

Acoustic Performance		
Impact Sound Reduction	ISO 10140-3	19dB

Maintenance Performance		
Resistance to Chemicals	ISO 26987 (EN 423)	Good resistance
Alco Hand Gels	Compatible for use with most commonly used alco-based hand gels	
Steam Cleaning	Suitable for steam cleaning on a periodic basis	

All Polyflor commercial sheet vinyl ranges provide a continuous, impervious and hygienic flooring solution which can be confidently cleaned in accordance with recommended maintenance procedures and approved maintenance products. The implementation of an effective cleaning regime is the most important defence against infection.

Sheet Size

Format	Size	Shades	Coverage per Roll
Sheet	2m x 20m (2.187 yds x 21.872 yds)	8	40m² (47.834 yds)

Polysafe Wood fx Acoustix PUR

PARQUET DESIGNS



Eton Oak Parquet 3399
plank size in sheet: 76.2 x 288.6mm
w/r 9822 LRV 24



Parish Oak Parquet 3398
plank size in sheet: 76.2 x 288.6mm
w/r 9841 LRV 32



American Oak 3382
plank size in sheet: 100 x 1000mm
w/r 3380 LRV 37



Sun Bleached Oak 3384
plank size in sheet: 200 x 1500mm
w/r 3372 LRV 31



Rustic Oak 3332
plank size in sheet: 83 x 333/666mm
w/r 3330 LRV 26



Silver Oak 3352
plank size in sheet: 83 x 333/666mm
w/r 3237 LRV 23



European Oak 3342
plank size in sheet: 100 x 1000mm
w/r 3340 LRV 23



Aged Oak 3389
plank size in sheet: 200 x 1500mm
w/r 9824 LRV 9

All you need to know

Our history

Founded in 1915, James Halstead plc, the parent company of Polyflor Ltd, was originally a textile company based in Manchester, UK, until the 1950's when it pioneered the development of homogeneous vinyl floorings.



Responsible sourcing

Polyflor is proud to be the first flooring manufacturer to be awarded BES 6001 certification for the Responsible Sourcing of Construction Product, achieving an Excellent rating. This is a recognised standard certified by BRE Global which proves that a manufacturer is using materials that have been responsibly sourced and acts responsibly.



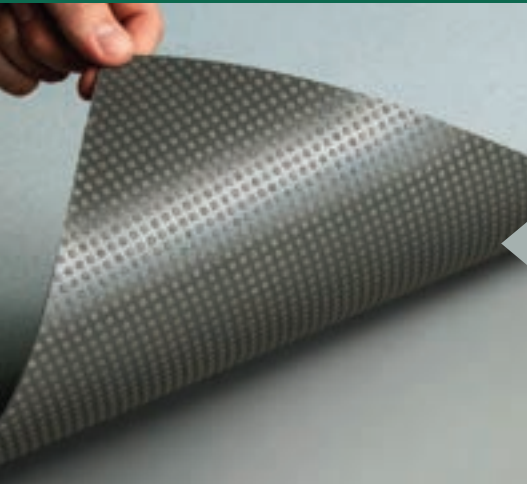
Help is here

Polyflor has dedicated and experienced personnel within its sales, marketing, technical and design departments, to provide comprehensive support to our customers. We are ready to assist with queries on topics such as product selection, specification, installation, performance and ongoing maintenance.



Product innovation

In collaboration with industry partners, Polyflor is working on developments in new products and technologies. Recent launches include a non-directional homogeneous sheet collection that keeps waste to a minimum and loose lay adhesive-free safety sheet and high design tile and plank flooring for quick turnaround projects.



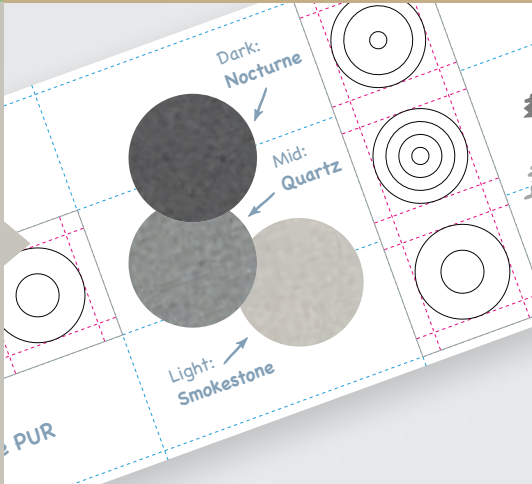
BES 6001

Responsible Sourcing

www.greenbooklive.com

Design service

Our designers can provide visuals and advise colours and product choices when you're looking to create a memorable floor design. We offer the precision and the flexibility of waterjet cutting to produce any design you require.



BIM objects

A selection of Polyflor's market leading product ranges are now available as Building Information Modelling (BIM) objects. These objects can be downloaded free of charge from the NBS National BIM Library or www.polyflor.com/bim and www.bimobject.com

Commitment to our supply chain

With ISO 9001 Quality Management and ISO 14001 accreditation, the availability of consistent, good quality products is ensured. We test our products to a wide range of international standards, including slip resistance and VOC emissions, to back-up their performance.



Flooring when you need it

Thanks to Polyflor's extensive warehousing facilities and commitment to holding large quantities of stock, we can react quickly to orders and offer faster lead times for our customers. Polyflor products are readily available worldwide through our wide network of supporting agents and wholesale partners.



Training at Polyflor

To encourage best practice throughout the flooring sector, Polyflor offers both floor laying and floor cleaning courses in a purpose-built facility. For more info contact trainingacademy@polyflor.com



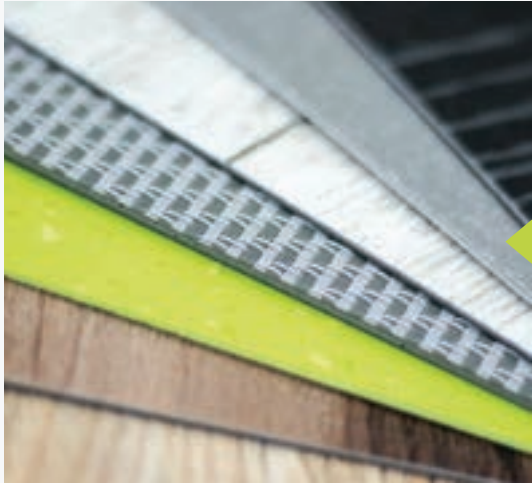
Recycling vinyl

Polyflor is a co-founding and funding member of Recofloor, the UK flooring industry's leading vinyl take back scheme for waste vinyl off-cuts and smooth uplifted flooring. For more information about the Recofloor recycling scheme visit www.recofloor.org



Low maintenance

Polyflor's PUR polyurethane reinforcement is cross linked and UV cured for enhanced protection, optimum appearance retention and superior cleaning benefits such as an easier more environmentally friendly maintenance regime. For further in-depth and tailored information on floor maintenance, visit



Free samples

To request free individual product samples of any of Polyflor's flooring collections, visit www.polyflor.ca and follow the link to Samples. Alternatively, you can call the dedicated Polyflor Sample Hotline on (905) 364-3000



NOTES

[illegible]

POLYFLOR™ INTERNATIONAL

Australia

Polyflor Australia
Tel: 1800 777 425
Email: sales@polyflor.com.au

Ireland

Polyflor Ireland
Tel: +353 (1) 864 9304
Email: salesireland@polyflor.com

Canada

Polyflor Canada Inc.
Tel: +1 905 364 3000
Email: sales@polyflor.ca

Malaysia

Polyflor Martex
Tel: 1300 80 7788
Email: sales@polyflor.com.my

China

Polyflor Hong Kong O/B Polyflor Ltd.
Tel: +(852) 2865 0101
Email: info@polyflor.com.hk

Middle East

Polyflor FZE
Tel: +971 50 406 8114
E-mail: aelwakil@polyflorfze.ae

Colombia

Polyflor Ltd. (LATAM Office)
Tel: +57 3223082375
Email: info@polyflor.com

New Zealand

Polyflor New Zealand Ltd.
Tel: 0800 765 935
Tel: +64 9 269 1111
Email: sales@polyflor.co.nz

France

James Halstead France SAS
Tel: +33 (0)8 20 20 32 11
Email: info@jhfrance.fr

Norway

Polyflor Nordic
Tel: +47 23 00 84 00
Email: firmapost@polyflor.no

Germany

objectflor Art und Design Belags GmbH
Tel: +49 (0) 2236 966 330
Email: info@objectflor.de

Spain

Polyflor Ltd.
Tel: +34 619 949 054
Email: info@polyflor.com

India

Polyflor India Pvt Ltd.
Tel: +91 22 4023 2485
Tel: +91 22 4023 2486
Email: info@polyflor.co.in

Sweden

Polyflor Nordic Sweden AB
Tel: +46 (0) 300 15820
Email: info@polyflor.se



POLYFLOR CANADA INC.

3209 Orlando Dr, Mississauga Ontario
L4V 1C5, Canada

Tel: (905) 364-3000

E-mail: sales@polyflor.ca

www.polyflor.ca

LIT369 9/22

James Halstead[™]
FLOORING