

EXPONA®

DESIGN PUR



## EXPONA DESIGN PUR

The Expona Design collection of luxury vinyl tiles blurs the lines between natural wood and stone finishes.

By intentionally including a variety of patterns with the same harmonious colour scheme, different floor coverings can be combined to add a unique element to any interior.

The exclusive designs featured in this collection provide the opportunity for creativity and encourage play and engagement.

- Luxury Vinyl Tile available in 30 colours
- PUR no wax, no finish, low maintenance
- R10 slip resistance per standard DIN 51130





# Expona Design PUR



## Technical Specification

Product Format		
Gauge	ISO 24346 (EN 428)	3.0mm
Wear Layer	ISO 24340 (EN 429)	0.70mm
Total Weight	ISO 23997 (EN 430)	5100g/m <sup>2</sup>
Finish	PUR	
Performance Requirements		
General Performance	ISO 10582 (EN 649) ASTM F1700	Conforms Class III Type A+B
Use Area	ISO 10874 (EN 685)	23, 34, 43
Slip Resistance	EN 13893 DIN 51130 / DIN EN 16165 Ann. B SDTM D2047 AS 4586	Class DS R10 ≥0.5 R10
Binder Content	ISO 10582	Type I
Abrasion Resistance	EN 649	Group T
Reaction to Fire	EN 13501-1 ASTM E662 ASTM E648 CAN/ULC S102.2	Class Bfl-S1 <450 Pass Class 1 FSV < 300; SDV < 500
Static Electrical Propensity	EN 1815	≤2.0kV Classified as 'antistatic'
Residual Indentation	ISO 24343-1 ASTM F970 ASTM F1914	<0.05mm* ≤0.005" @ 750psi ≤0.005"
Castor Chair (continuous use)	ISO 4918 (EN 425)	Suitable
Dimensional Stability	ISO 23999 (EN 434) ASTM F2199	≤0.10% Pass
Flexibility	ASTM F137	1" - Pass
Underfloor Heating	Suitable, max 27°C	

\*Average test value from current production.

## Plank & Tile Sizes

Format	Size	Shades	Quantity per Box	Coverage per Box
Plank	152.4mm x 914.4mm (6" x 36")	1	24	3.34m <sup>2</sup> (35.951 ft)
	203.2mm x 1219.2mm (8" x 48")	2	14	3.46m <sup>2</sup> (37.243 ft)
	184.2mm x 1524mm (7.25" x 60")	7	12	3.37m <sup>2</sup> (36.274 ft)
	203.2mm x 1524mm (8" x 60")	4	11	3.41m <sup>2</sup> (36.704 ft)

Performance Requirements (Continued)		
Light Fastness	ISO 105-B02 (Method 3)	≥6
Resistance to Light	ASTM F1515	ΔE ≤ 8.0 - Meets
Resistance to Heat	ASTM F1514	ΔE ≤ 8.0 - Meets

Sustainability		
BRE Green Guide	A+ ENP 429	
GreenTag	LCA Rate Gold Plus	GreenRate level A
Specific EN 15804 EPD	Available	
Recyclable	100%	
Recycled Content	Up to 40%	
REACH	Compliant	
Indoor Air Comfort Gold	Eurofins certified product	
FloorScore	Certified	
Finnish M1 Classification	Certified	
AgBB/ABG	Pass	
Responsible Sourcing	BES 6001 SA 8000	Very Good Approved factory

Acoustic Performance			
Impact Sound Reduction	ISO 10140-3	3dB	
Sound Transmission Coefficient	ASTM E90/492	STC 55	
Impact Insulation Class	ASTM E90/492	IIC 36	

Maintenance Performance			
Resistance to Chemicals	ISO 26987 (EN 423) ASTM F925	Good resistance Good resistance	
Regular light maintenance is more cost-effective than periodic heavy maintenance and more beneficial to the floor covering.			

Format	Size	Shades	Quantity per Box	Coverage per Box
Tile	609.6mm x 609.6mm (24" x 24")	3	9	3.34m <sup>2</sup> (35.951 ft)
	304.8mm x 609.6mm (12" x 24")	3	18	3.34m <sup>2</sup> (35.951 ft)
	304.8mm x 914.4mm (12" x 36")	2	12	3.34m <sup>2</sup> (35.951 ft)
	457.2mm x 914.4mm (18" x 36")	1	8	3.34m <sup>2</sup> (35.951 ft)
	914.4mm x 914.4mm (36" x 36")	3	6	5.01m <sup>2</sup> (53.927 ft)
	609.6mm x 1219.2mm (24" x 48")	4	6	4.46m <sup>2</sup> (48.007 ft)

203.2mm x 1524mm  
8" x 60"

Salvaged Pier Timber 9048\* LRV 57/14/43

Rustic Spiced Timber 9047\* LRV 48/8/40

Whiskey Barrel Timber 9049\* LRV 41/13/28

Reclaimed Inked Oak 9051\* LRV 33/20/13

184.2mm x 1524mm  
7.25" x 60"

Pacific Oak 9041 LRV 47

Parkside Oak 9039 LRV 31

Mango Oak 9042 LRV 22

Promenade Oak 9038 LRV 25

Coral Medley 9126 LRV 48

Smoked Medley 9125 LRV 27

Sepia Medley 9127 LRV 27

\*Each shade contains the 6 plank variants below.

203.2mm x 1219.2mm  
8" x 48"

Silvered Driftwood 6146 LRV 19

Natural Brushed Oak 6179 LRV 23

152.4mm x 914.4mm  
6" x 36"

Light Elm 6182 LRV 25

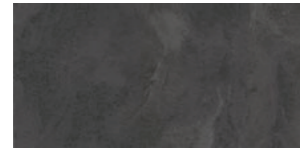
304.8mm x 609.6mm  
12" x 24"



Monochrome Geotexture 9148  
LRV 39



Cream Geotexture 9147  
LRV 58



Atlantic Slate 7154  
LRV 13

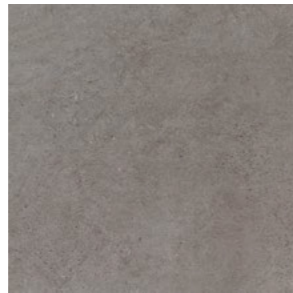
609.6 x 609.6mm  
24" x 24"



Grey Stencil Concrete 9139  
LRV 38

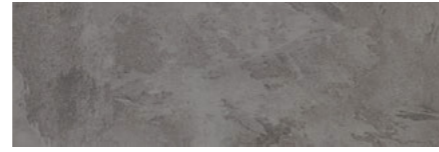


Rusted Stencil Concrete 9141  
LRV 24

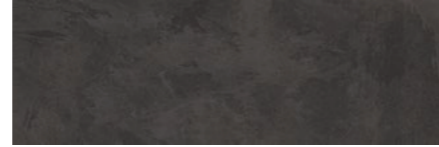


Cool Grey Concrete 7237  
LRV 22

304.8 x 914.4mm  
12" x 36"



Silverline Slate 9145  
LRV 24



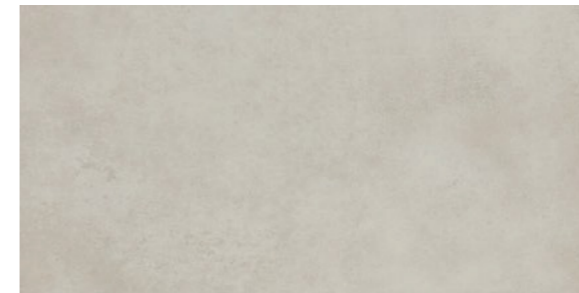
Charcoal Slate 9146  
LRV 7

457.2 x 914.4mm  
18" x 36"

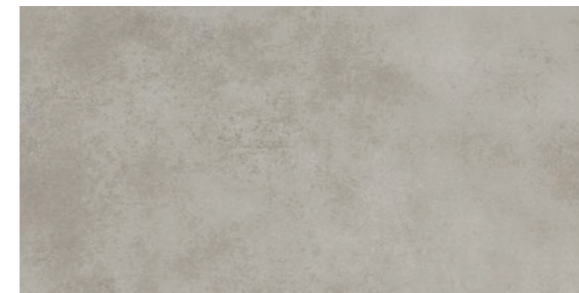


Black Treadplate 8122  
LRV 12

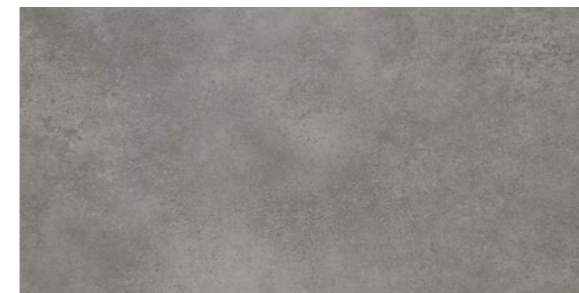
609.6 x 1219.2mm  
24" x 48"



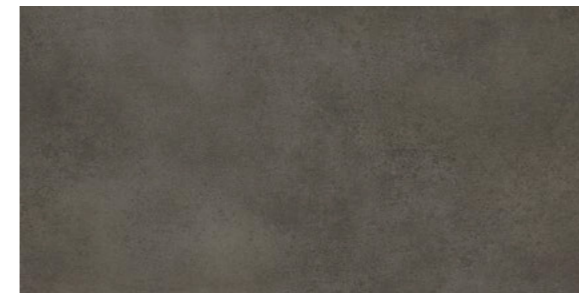
Frosted Cement 9134  
LRV 63



Wet Cement 9135  
LRV 45



Subway Cement 9133  
LRV 27

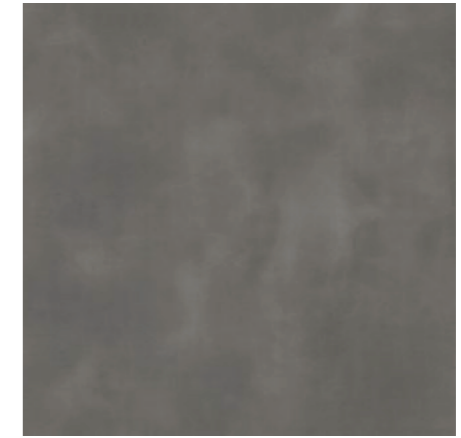


Factory Cement 9137  
LRV 16

914.4mm x 914.4mm  
36" x 36"



Pearl Stone 9128  
LRV 42



Medina Stone 9131  
LRV 18



African Blue Stone 9132  
LRV 11





## Our history

Founded in 1915, James Halstead plc, the parent company of Polyflor Ltd, was originally a textile company based in Manchester, UK, until the 1950's when it pioneered the development of homogeneous vinyl floorings.



## Responsible sourcing

Polyflor is proud to be the first flooring manufacturer to be awarded BES 6001 certification for the Responsible Sourcing of Construction Product, achieving an Excellent rating. This is a recognised standard certified by BRE Global which proves that a manufacturer is using materials that have been responsibly sourced and acts responsibly.



## Help is here

Polyflor has dedicated and experienced personnel within its sales, marketing, technical and design departments, to provide comprehensive support to our customers. We are ready to assist with queries on topics such as product selection, specification, installation, performance and ongoing maintenance.



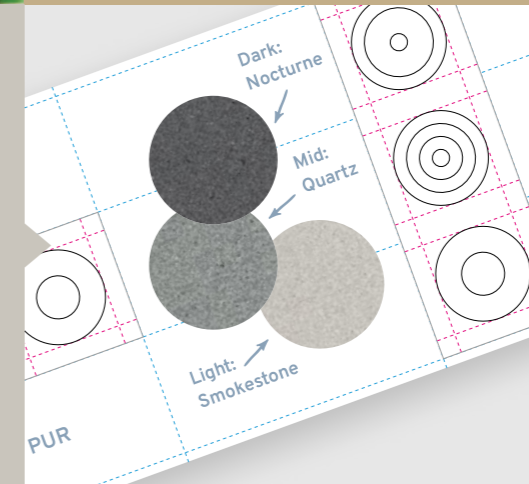
## Product innovation

In collaboration with industry partners, Polyflor is working on developments in new products and technologies. Recent launches include a non-directional homogeneous sheet collection that keeps waste to a minimum and loose lay adhesive-free safety sheet and high design tile and plank flooring for quick turnaround projects.



## Design service

Our designers can provide visuals and advise colours and product choices when you're looking to create a memorable floor design. We offer the precision and the flexibility of waterjet cutting to produce any design you require.



## BIM objects

A selection of Polyflor's market leading product ranges are now available as Building Information Modelling (BIM) objects. These objects can be downloaded free of charge from the NBS National BIM Library or [www.polyflor.com/bim](http://www.polyflor.com/bim) and [www.bimobject.com](http://www.bimobject.com)

## Commitment to our supply chain

With ISO 9001 Quality Management and ISO 14001 accreditation, the availability of consistent, good quality products is ensured. We test our products to a wide range of international standards, including slip resistance and VOC emissions, to back-up their performance.



## Flooring when you need it

Thanks to Polyflor's extensive warehousing facilities and commitment to holding large quantities of stock, we can react quickly to orders and offer faster lead times for our customers. Polyflor products are readily available worldwide through our wide network of supporting agents and wholesale partners.



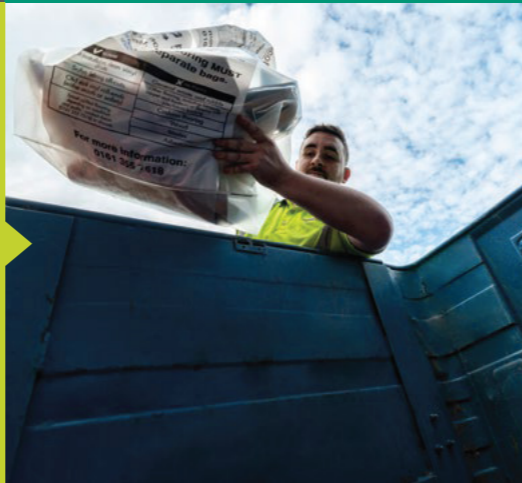
## Training at Polyflor

To encourage best practice throughout the flooring sector, Polyflor offers both floor laying and floor cleaning courses in a purpose-built facility. For more info contact [info@polyflor.ca](mailto:info@polyflor.ca)



## Recycling vinyl

Polyflor is a co-founding and funding member of Recofloor, the UK flooring industry's leading vinyl take back scheme for waste vinyl off-cuts and smooth uplifted flooring. For more information about the Recofloor recycling scheme visit [www.recofloor.org](http://www.recofloor.org)



## Low maintenance

Polyflor's PUR polyurethane reinforcement is cross linked and UV cured for enhanced protection, optimum appearance retention and superior cleaning benefits such as an easier more environmentally friendly maintenance regime. For further in-depth and tailored information on floor maintenance, visit [www.polyflor.ca](http://www.polyflor.ca)



## Free samples

To request free individual product samples of any of Polyflor's flooring collections, visit [www.polyflor.ca](http://www.polyflor.ca) or email us at [samples@polyflor.ca](mailto:samples@polyflor.ca). Alternatively, you can call the dedicated Polyflor Sample Hotline on (905) 364-3000



Charcoal Slate 9146



Light Elm 6182

POLYFLOR™ INTERNATIONAL

Australia  
Polyflor Australia  
Tel: 1800 777 425  
Email: sales@polyflor.com.au

Canada  
Polyflor Canada Inc.  
Tel: +1 905 364 3000  
Email: sales@polyflor.ca

China  
Polyflor Hong Kong O/B Polyflor Ltd.  
Tel: +(852) 2865 0101  
Email: info@polyflor.com.hk

Colombia  
Polyflor Ltd. (LATAM Office)  
Tel: +57 3223082375  
Email: info@polyflor.com

France  
James Halstead France SAS  
Tel: +33 (0)8 20 20 32 11  
Email: info@jhfrance.fr

Germany  
objectflor Art und Design Belags GmbH  
Tel: +49 (0) 2236 966 330  
Email: info@objectflor.de

India  
Polyflor India Pvt Ltd.  
Tel: +91 22 4023 2485  
Tel: +91 22 4023 2486  
Email: info@polyflor.co.in

Ireland  
Polyflor Ireland  
Tel: +353 (1) 864 9304  
Email: salesireland@polyflor.com

Malaysia  
Polyflor Martex  
Tel: 1300 80 7788  
Email: sales@polyflor.com.my

Middle East  
Polyflor FZE  
Tel: +971 50 406 8114  
E-mail: aelwakil@polyflorfze.ae

New Zealand  
Polyflor New Zealand Ltd.  
Tel: 0800 765 935  
Tel: +64 9 269 1111  
Email: sales@polyflor.co.nz

Norway  
Polyflor Nordic  
Tel: +47 23 00 84 00  
Email: firmapost@polyflor.no

Spain  
Polyflor Ltd.  
Tel: +34 619 949 054  
Email: info@polyflor.com

Sweden  
Polyflor Nordic Sweden AB  
Tel: +46 (0) 300 15820  
Email: info@polyflor.se

POLYFLOR CANADA INC.

3209 Orlando Dr, Mississauga, Ontario  
L4V 1C5, Canada

Tel: (905) 364-3000

E-mail: sales@polyflor.ca

[www.polyflor.ca](http://www.polyflor.ca)

*James Halstead*<sup>™</sup>  
FLOORING