

Expona Design PUR

PRODUCT SPECIFICATION

Key Features

- > Wood, stone & abstract designs
- > Multiple plank & tile sizes
- > Inlay accessories for bespoke designs
- > Low VOC emissions
- > Heavy commercial & residential



Product Format	Standard	Result
Gauge	ISO 24346 (EN 428)	3.0mm
Wear Layer	ISO 24340 (EN 429)	0.70mm
Total Weight	ISO 23997 (EN 430)	5100g/m ²
Finish		PUR

Plank & Tile Sizes	Size	Shades	Quantity per Box	Coverage per Box/Roll
Plank	152.4mm x 914.4mm	1	24	3.34m ²
	203.2mm x 1219.2mm	2	14	3.46m ²
	184.2mm x 1524mm	7	12	3.37m ²
	203.2mm x 1524mm	4	11	3.41m ²
Tile	609.6mm x 609.6mm	3	9	3.34m ²
	304.8mm x 609.6mm	3	18	3.34m ²
	304.8mm x 914.4mm	2	12	3.34m ²
	457.2mm x 914.4mm	1	8	3.34m ²
	914.4mm x 914.4mm	3	6	5.01m ²
	609.6mm x 1219.2mm	4	6	4.46m ²

Performance Requirements	Standard	Result
General Performance	ISO 10582 (EN 649) ASTM F1700	Conforms Class III Type A+B
Use Area	ISO 10874 (EN 685)	23, 34, 43
Slip Resistance	EN 13893 DIN 51130 / DIN EN 16165 Ann. B AS 4586 ASTM D2047	Class DS R10 R10 ≥0.5
Binder Content	ISO 10582	Type I
Abrasion Resistance	EN 649	Group T

Reaction to Fire	EN 13501-1 ASTM E662 ASTM E648 CAN/ULC S102.2	Class Bfl-S1 <450 Pass Class 1 FSV < 300; SDV < 500
Static Electrical Propensity	EN 1815	≤2.0kV Classified as 'antistatic'
Residual Indentation	ISO 24343-1 ASTM F970 ASTM F1914	<0.05mm* ≤0.005" @ 750psi ≤0.005"
Castor Chair (continuous use)	ISO 4918 (EN 425)	Suitable
Dimensional Stability	ISO 23999 (EN 434) ASTM F2199	≤0.10% Pass
Flexibility	ASTM F137	1" - Pass
Underfloor Heating		Suitable, max 27°C
Light Fastness	ISO 105-B02 (Method 3)	≥6
Resistance to Light	ASTM F1515	ΔE ≤ 8.0 - Meets
Resistance to Heat	ASTM F1514	ΔE ≤ 8.0 - Meets

*Average test value from current production.

Sustainability	Standard	Result
BRE Green Guide		A+ ENP 429
GreenTag	LCA Rate Gold Plus	GreenRate level A
Specific EN 15804 EPD		Available
Recyclable		100%
Recycled Content		Up to 40%
REACH		Compliant
Indoor Air Comfort Gold		Eurofins certified product
FloorScore		Certified
Finnish M1 Classification		Certified
AgBB/ABG		Pass
Responsible Sourcing	BES 6001 SA 8000	Very good Approved factory

Acoustic Performance	Standard	Result
Impact Sound Reduction	ISO 10140-3	3dB
Sound Transmission Coefficient	ASTM E90/492	STC 55
Impact Insulation Class	ASTM E90/492	IIC 36

Maintenance Performance	Standard	Result
Resistance to Chemicals	ISO 26987 (EN 423) ASTM F925	Good resistance Good resistance

Regular light maintenance is more cost-effective than periodic heavy maintenance and more beneficial to the floor covering.



Polyflor Canada Inc.

3209 Orlando Drive, Mississauga, Ontario, L4V 1C5, Canada • Tel: 905-364-3000 • Email: sales@polyflor.ca • www.polyflor.ca

© At the time of writing and publication of sheet, all the information is specified correctly. The company reserves the right to change the specifications of this product at any time without prior notice to third parties.

Expona Design PUR



RANGE SHADES

203.2mm x 1524mm
8" x 60"



Salvaged Pier Timber **9048***

LRV 57/14/43



Rustic Spiced Timber **9047***

LRV 48/8/40



Whiskey Barrel Timber **9049***

LRV 41/13/28



Reclaimed Inked Oak **9051***

LRV 33/20/13

*Each shade contains the 6 plank variants below.



Expona Design PUR

184.2mm x 1524mm

7.25" x 60"



Pacific Oak **9041**

 LRV 47



Parkside Oak **9039**

 LRV 31



Mango Oak **9042**

 LRV 22



Promenade Oak **9038**

 LRV 25



Coral Medley **9126**

 LRV 48



Smoked Medley **9125**

 LRV 27



Sepia Medley **9127**

 LRV 27

203.2mm x 1219.2mm

8" x 48"



Silvered Driftwood **6146**

 LRV 19



Natural Brushed Oak **6179**

 LRV 23

152.4mm x 914.4mm

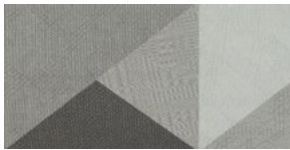
6" x 36"




Light Elm **6182**


LRV 25

304.8mm x 609.6mm
12" x 24"



Monochrome Geotexture **9148** 
LRV 39





Cream Geotexture **9147** 
LRV 58





Atlantic Slate **7154**
LRV 13

609.6 x 609.6mm
24" x 24"



Grey Stencil Concrete **9139**  
LRV 38



Rusted Stencil Concrete **9141**  
LRV 24

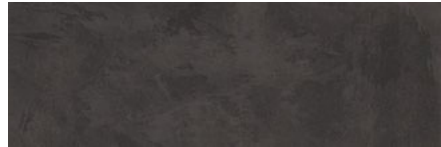


Cool Grey Concrete **7237**
LRV 22

304.8 x 914.4mm
12" x 36"

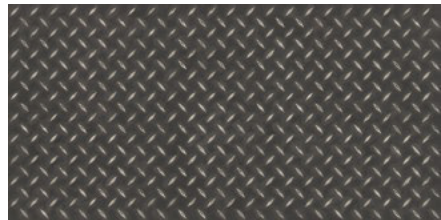


Silverline Slate **9145** 
LRV 24



Charcoal Slate **9146** 
LRV 7

457.2 x 914.4mm
18" x 36"



Black Treadplate **8122**
LRV 12

609.6 x 1219.2mm
24" x 48"



Frosted Cement **9134**

 LRV 63



Wet Cement **9135**

 LRV 45



Subway Cement **9133**

 LRV 27



Factory Cement **9137**

 LRV 16

914.4mm x 914.4mm
36" x 36"



Pearl Stone **9128**

LRV 42



Medina Stone **9131**

LRV 18



African Blue Stone **9132**

LRV 11

LRV - Light Reflectance Value

 Bevelled Edges

 Colour/Pattern Variation

Polyflor Canada Inc.

3209 Orlando Drive, Mississauga, Ontario, L4V 1C5, Canada • Tel: 905-364-3000 • Email: sales@polyflor.ca • www.polyflor.ca

© At the time of writing and publication of sheet, all the information is specified correctly. The company reserves the right to change the specifications of this product at any time without prior notice to third parties.